

## Product datasheet for **TA338481**

### **FAM38B (PIEZO2) Rabbit Polyclonal Antibody**

#### **Product data:**

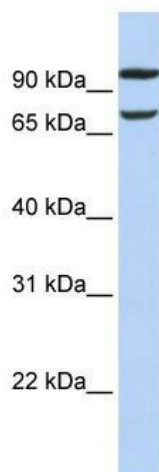
Product Type:	Primary Antibodies
Applications:	WB
Recommended Dilution:	WB
Reactivity:	Human
Host:	Rabbit
Isotype:	IgG
Clonality:	Polyclonal
Immunogen:	The immunogen for anti-PIEZO2 antibody: synthetic peptide directed towards the middle region of human FAM38B. Synthetic peptide located within the following region: AGNSTESSKTPVTIEKIYPYVKAPSDSNSKPIKQLLENFMDITIILS
Formulation:	Liquid. Purified antibody supplied in 1x PBS buffer with 0.09% (w/v) sodium azide and 2% sucrose. <i>Note that this product is shipped as lyophilized powder to China customers.</i>
Purification:	Affinity Purified
Conjugation:	Unconjugated
Storage:	Store at -20°C as received.
Stability:	Stable for 12 months from date of receipt.
Predicted Protein Size:	81 kDa
Gene Name:	piezo type mechanosensitive ion channel component 2
Database Link:	<a href="#">NP_071351</a> <a href="#">Entrez Gene 63895 Human</a> <a href="#">Q9H5I5</a>
Background:	PIEZO2 is a multi-pass membrane protein. Potential. It belongs to the FAM38 family. The exact function of PIEZO2 remains unknown.
Synonyms:	C18orf30; C18orf58; DA3; DA5; FAM38B; FAM38B2; HsT748; HsT771; MWKS
Note:	Immunogen Sequence Homology: Dog: 100%; Pig: 100%; Rat: 100%; Horse: 100%; Human: 100%; Mouse: 100%; Bovine: 100%; Rabbit: 100%; Guinea pig: 100%



[View online »](#)

Protein Families: Transmembrane

### Product images:



WB Suggested Anti-PIEZO2Antibody Titration: 0.2-1 ug/ml; ELISA Titer: 1: 312500; Positive Control: 721\_B cell lysate. PIEZO2 is supported by BioGPS gene expression data to be expressed in 721\_B