

Product datasheet for TA338479

SLC22A23 Rabbit Polyclonal Antibody

Product data:

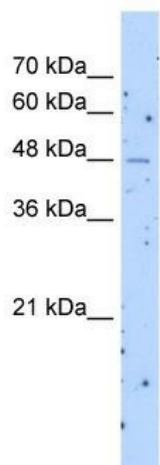
Product Type:	Primary Antibodies
Applications:	WB
Recommended Dilution:	WB
Reactivity:	Human
Host:	Rabbit
Isotype:	IgG
Clonality:	Polyclonal
Immunogen:	The immunogen for anti-SLC22A23 antibody: synthetic peptide directed towards the middle region of human SLC22A23. Synthetic peptide located within the following region: VVLVCVNSLTGYGIHHCFARSMMGHEVKVPLENFYADYYTTASIALVSCL
Formulation:	Liquid. Purified antibody supplied in 1x PBS buffer with 0.09% (w/v) sodium azide and 2% sucrose.
Purification:	Protein A purified
Conjugation:	Unconjugated
Storage:	Store at -20°C as received.
Stability:	Stable for 12 months from date of receipt.
Predicted Protein Size:	45 kDa
Gene Name:	solute carrier family 22 member 23
Database Link:	NP_068764 Entrez Gene 63027 Human A1A5C7
Background:	SLC22A23 belongs to a large family of transmembrane proteins that function as uniporters, symporters, and antiporters to transport organic ions across cell membranes. SLC22A23 belongs to a large family of transmembrane proteins that function as uniporters, symporters, and antiporters to transport organic ions across cell membranes (Jacobsson et al., 2007 [PubMed 17714910]). [supplied by OMIM]
Synonyms:	C6orf85


[View online »](#)

Note: Immunogen Sequence Homology: Dog: 100%; Pig: 100%; Rat: 100%; Horse: 100%; Human: 100%; Mouse: 100%; Rabbit: 100%; Bovine: 93%; Guinea pig: 93%

Protein Families: Transmembrane

Product images:



WB Suggested Anti-SLC22A23 Antibody Titration:
1.0 ug/ml; Positive Control: Jurkat cell lysate