

## Product datasheet for **TA338478**

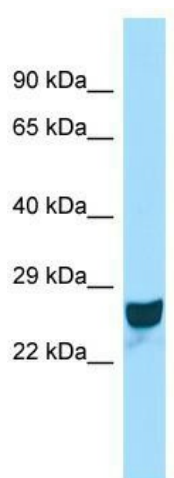
### Ccdc90b Rabbit Polyclonal Antibody

#### Product data:

Product Type:	Primary Antibodies
Applications:	WB
Recommended Dilution:	WB
Reactivity:	Rat
Host:	Rabbit
Isotype:	IgG
Clonality:	Polyclonal
Immunogen:	The immunogen for anti-Ccdc90b antibody is: synthetic peptide directed towards the middle region of Rat Ccdc90b. Synthetic peptide located within the following region: VKQQLINETSRIRADNRLDINLERSRVTDMFTDQEKQLMEATNEFTKKDM
Formulation:	Liquid. Purified antibody supplied in 1x PBS buffer with 0.09% (w/v) sodium azide and 2% sucrose. <i>Note that this product is shipped as lyophilized powder to China customers.</i>
Purification:	Affinity Purified
Conjugation:	Unconjugated
Storage:	Store at -20°C as received.
Stability:	Stable for 12 months from date of receipt.
Predicted Protein Size:	28 kDa
Gene Name:	coiled-coil domain containing 90B
Database Link:	<a href="#">NP_001020056</a> <a href="#">Entrez Gene 308820 Rat</a> <a href="#">Q4V897</a>
Background:	The function of this protein remains unknown.
Synonyms:	MDS011; MDS025; MGC104239
Note:	Immunogen Sequence Homology: Dog: 100%; Pig: 100%; Rat: 100%; Horse: 100%; Human: 100%; Mouse: 100%; Bovine: 100%; Rabbit: 100%; Zebrafish: 100%; Guinea pig: 100%



[View online »](#)

**Product images:**

Host: Rabbit; Target Name: Ccdc90b; Sample  
Tissue: Rat Spleen lysates; Antibody Dilution: 1.0  
ug/ml