

Product datasheet for **TA338477**

ELOVL5 Rabbit Polyclonal Antibody

Product data:

Product Type:	Primary Antibodies
Applications:	WB
Recommended Dilution:	WB
Reactivity:	Human
Host:	Rabbit
Isotype:	IgG
Clonality:	Polyclonal
Immunogen:	The immunogen for anti-ELOVL5 antibody: synthetic peptide directed towards the N terminal of human ELOVL5. Synthetic peptide located within the following region: EHFDA SLSTYFKALLGPRDTRVKGWFLLDNYIPTFICSVIYLLIVWLGPK
Formulation:	Liquid. Purified antibody supplied in 1x PBS buffer with 0.09% (w/v) sodium azide and 2% sucrose. <i>Note that this product is shipped as lyophilized powder to China customers.</i>
Purification:	Affinity Purified
Conjugation:	Unconjugated
Storage:	Store at -20°C as received.
Stability:	Stable for 12 months from date of receipt.
Predicted Protein Size:	35 kDa
Gene Name:	ELOVL fatty acid elongase 5
Database Link:	NP_068586 Entrez Gene 60481 Human Q9NYP7
Background:	ELOVL5 plays a role in elongation of long-chain polyunsaturated fatty acids. ELOVL5 plays a role in elongation of long-chain polyunsaturated fatty acids (Leonard et al., 2000 [PubMed 10970790]). [supplied by OMIM]. PRIMARYREFSEQ_SPAN PRIMARY_IDENTIFIER PRIMARY_SPAN COMP 1-3003 AF338241.1 9-3011
Synonyms:	dj483K16.1; HELO1; SCA38



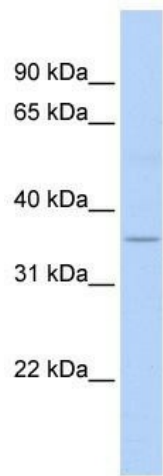
[View online »](#)

Note: Immunogen Sequence Homology: Human: 100%; Mouse: 100%; Rabbit: 100%; Dog: 93%; Rat: 93%; Pig: 92%; Goat: 92%; Bovine: 92%; Guinea pig: 85%; Horse: 79%

Protein Families: Transmembrane

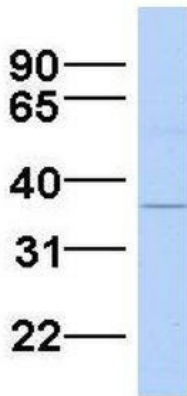
Protein Pathways: Biosynthesis of unsaturated fatty acids

Product images:



WB Suggested Anti-ELOVL5 Antibody Titration:
0.2-1 ug/ml; ELISA Titer: 1: 62500; Positive Control: Human heart

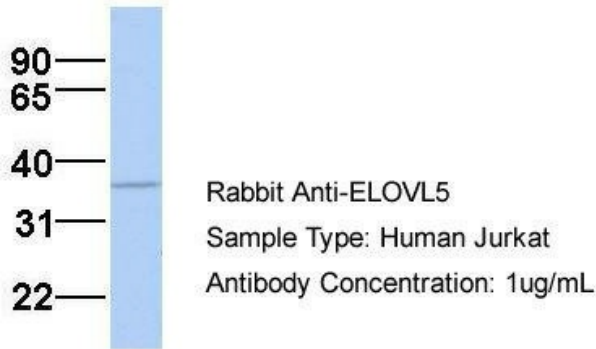
ELOVL5



Rabbit Anti-ELOVL5
Sample Type: Human Fetal Heart
Antibody Concentration: 1ug/mL

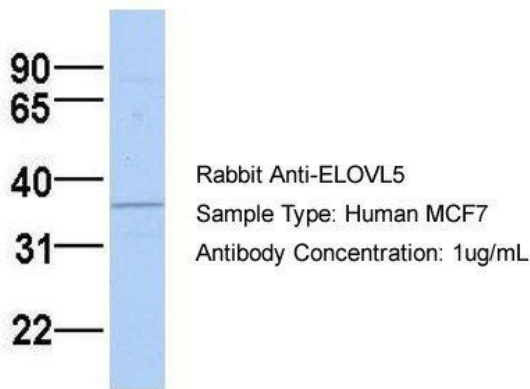
Host: Rabbit; Target Name: ELOVL5; Sample Tissue: Human Fetal Heart; Antibody Dilution: 1.0 ug/ml

ELOVL5



Host: Rabbit; Target Name: ELOVL5; Sample Tissue: Jurkat; Antibody Dilution: 1.0 ug/ml
 ELOVL5 is strongly supported by BioGPS gene expression data to be expressed in Human Jurkat cells

ELOVL5



Host: Rabbit; Target Name: ELOVL5; Sample Tissue: MCF7; Antibody Dilution: 1.0 ug/ml. There is BioGPS gene expression data showing that ELOVL5 is expressed in MCF7