

Product datasheet for **TA338476**

Fam3a Rabbit Polyclonal Antibody

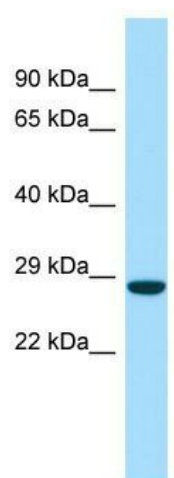
Product data:

| | |
|-------------------------|--|
| Product Type: | Primary Antibodies |
| Applications: | WB |
| Recommended Dilution: | WB |
| Reactivity: | Rat |
| Host: | Rabbit |
| Isotype: | IgG |
| Clonality: | Polyclonal |
| Immunogen: | The immunogen for anti-Fam3a antibody is: synthetic peptide directed towards the C-terminal region of Rat Fam3a. Synthetic peptide located within the following region: YDDPATKMNEETRKLFSSELGSRNAKELAFRDSWVFGAKGVQNKSPFEQH |
| Formulation: | Liquid. Purified antibody supplied in 1x PBS buffer with 0.09% (w/v) sodium azide and 2% sucrose. <i>Note that this product is shipped as lyophilized powder to China customers.</i> |
| Purification: | Affinity Purified |
| Conjugation: | Unconjugated |
| Storage: | Store at -20°C as received. |
| Stability: | Stable for 12 months from date of receipt. |
| Predicted Protein Size: | 24 kDa |
| Gene Name: | family with sequence similarity 3, member A |
| Database Link: | NP_001102794 Entrez Gene 501664 Rat |
| Background: | The function of this protein remains unknown. |
| Synonyms: | 2-19; 2.19; DXS560S; OTTHUMP00000015419; XAP-7 |
| Note: | Immunogen Sequence Homology: Dog: 100%; Pig: 100%; Rat: 100%; Horse: 100%; Human: 100%; Mouse: 100%; Bovine: 100%; Rabbit: 100%; Guinea pig: 100%; Zebrafish: 85% |



[View online »](#)

Product images:



Host: Rabbit; Target Name: Fam3a; Sample
Tissue: Rat Pancreas lysates; Antibody Dilution:
1.0 ug/ml