

Product datasheet for **TA338475**

ADAM30 Rabbit Polyclonal Antibody

Product data:

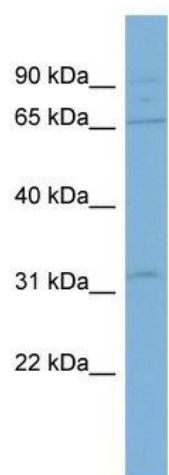
Product Type:	Primary Antibodies
Applications:	WB
Recommended Dilution:	WB
Reactivity:	Human
Host:	Rabbit
Isotype:	IgG
Clonality:	Polyclonal
Immunogen:	The immunogen for anti-ADAM30 antibody: synthetic peptide directed towards the N terminal of human ADAM30. Synthetic peptide located within the following region: IEWQMAPYENKARLRDFPGSYKHPKYLELILLFDQSRVNFVNNNLSQVIH
Formulation:	Liquid. Purified antibody supplied in 1x PBS buffer with 0.09% (w/v) sodium azide and 2% sucrose. <i>Note that this product is shipped as lyophilized powder to China customers.</i>
Purification:	Affinity Purified
Conjugation:	Unconjugated
Storage:	Store at -20°C as received.
Stability:	Stable for 12 months from date of receipt.
Predicted Protein Size:	66 kDa
Gene Name:	ADAM metalloproteinase domain 30
Database Link:	NP_068566 Entrez Gene 11085 Human Q9UKF2
Background:	ADAM30 is a member of the ADAM (a disintegrin and metalloprotease domain) family. Members of this family are membrane-anchored proteins structurally related to snake venom disintegrins, and have been implicated in a variety of biological processes involvi
Synonyms:	svph4
Note:	Immunogen Sequence Homology: Human: 100%



[View online »](#)

Protein Families: Druggable Genome, Transmembrane

Product images:



WB Suggested Anti-ADAM30 Antibody Titration:
0.2-1 ug/ml; ELISA Titer: 1: 312500; Positive
Control: COLO205 cell lysate ADAM30 is
supported by BioGPS gene expression data to be
expressed in COLO205