

## Product datasheet for **TA338471**

### Ceramide synthase 1 (CERS1) Rabbit Polyclonal Antibody

#### Product data:

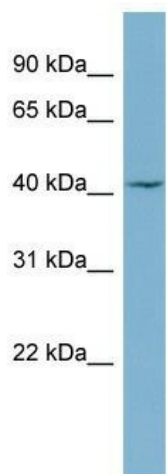
Product Type:	Primary Antibodies
Applications:	WB
Recommended Dilution:	WB
Reactivity:	Human
Host:	Rabbit
Isotype:	IgG
Clonality:	Polyclonal
Immunogen:	The immunogen for anti-CERS1 antibody: synthetic peptide directed towards the middle region of human CERS1. Synthetic peptide located within the following region: LYIVAFAAKVLTGQVHELKDLREYDTAEAQSLKPSKA EKPLRNLGLVKDKR
Formulation:	Liquid. Purified antibody supplied in 1x PBS buffer with 0.09% (w/v) sodium azide and 2% sucrose. <i>Note that this product is shipped as lyophilized powder to China customers.</i>
Purification:	Affinity Purified
Conjugation:	Unconjugated
Storage:	Store at -20°C as received.
Stability:	Stable for 12 months from date of receipt.
Predicted Protein Size:	39 kDa
Gene Name:	ceramide synthase 1
Database Link:	<a href="#">NP_067090</a> <a href="#">Entrez Gene 10715 Human P27544</a>
Background:	This gene encodes a member of the bone morphogenetic protein (BMP) family and the TGF-beta superfamily. This group of proteins is characterized by a polybasic proteolytic processing site that is cleaved to produce a mature protein containing seven conserv
Synonyms:	EPM8; LAG1; LASS1; UOG1
Note:	Immunogen Sequence Homology: Rat: 100%; Horse: 100%; Human: 100%; Mouse: 100%



[View online »](#)

Protein Families: Druggable Genome

### Product images:



WB Suggested Anti-CERS1 Antibody Titration: 0.2-1 ug/ml; ELISA Titer: 1: 12500; Positive Control: OVCAR-3 cell lysate