

## Product datasheet for **TA338468**

### Cadherin 22 (CDH22) Rabbit Polyclonal Antibody

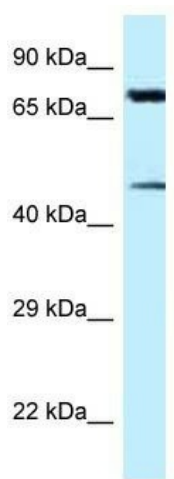
#### Product data:

Product Type:	Primary Antibodies
Applications:	WB
Recommended Dilution:	WB
Reactivity:	Human
Host:	Rabbit
Isotype:	IgG
Clonality:	Polyclonal
Immunogen:	The immunogen for anti-CDH22 antibody: synthetic peptide directed towards the N terminal of human CDH22. Synthetic peptide located within the following region: LIDELTGDIHAMERLDREQKTFYTLRAQARDRATNRLLEPESEFIKVD
Formulation:	Liquid. Purified antibody supplied in 1x PBS buffer with 0.09% (w/v) sodium azide and 2% sucrose.
Purification:	Protein A purified
Conjugation:	Unconjugated
Storage:	Store at -20°C as received.
Stability:	Stable for 12 months from date of receipt.
Predicted Protein Size:	73 kDa
Gene Name:	cadherin 22
Database Link:	<a href="#">NP_067071</a> <a href="#">Entrez Gene 64405 Human</a> <a href="#">Q9UJ99</a>
Background:	CDH22 is a member of the cadherin superfamily. CDH22 is composed of five cadherin repeat domains and a cytoplasmic tail similar to the highly conserved cytoplasmic region of classical cadherins.
Synonyms:	C20orf25; dj998H6.1
Note:	Immunogen Sequence Homology: Dog: 100%; Pig: 100%; Rat: 100%; Horse: 100%; Human: 100%; Mouse: 100%; Bovine: 100%; Rabbit: 100%; Guinea pig: 100%; Zebrafish: 91%


[View online »](#)

Protein Families: Transmembrane

### Product images:



WB Suggested Anti-CDH22 Antibody Titration: 5.0 ug/ml; Positive Control: HepG2 cell lysate