

## Product datasheet for **TA338458**

### TXNDC13 (TMX4) Rabbit Polyclonal Antibody

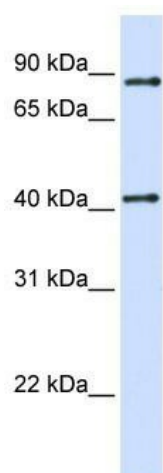
#### Product data:

Product Type:	Primary Antibodies
Applications:	IF, WB
Recommended Dilution:	WB, IF
Reactivity:	Human
Host:	Rabbit
Isotype:	IgG
Clonality:	Polyclonal
Immunogen:	The immunogen for anti-TMX4 antibody: synthetic peptide directed towards the C terminal of human TMX4. Synthetic peptide located within the following region: GVDEERSEANDQGPPGEDGVTREEVEPEEAEEGISEQPCPADTEVVEDSL
Formulation:	Liquid. Purified antibody supplied in 1x PBS buffer with 0.09% (w/v) sodium azide and 2% sucrose.
Purification:	Affinity Purified
Conjugation:	Unconjugated
Storage:	Store at -20°C as received.
Stability:	Stable for 12 months from date of receipt.
Predicted Protein Size:	39 kDa
Gene Name:	thioredoxin related transmembrane protein 4
Database Link:	<a href="#">NP_066979</a> <a href="#">Entrez Gene 56255 Human</a> <a href="#">Q9H1E5</a>
Background:	TMX4 is a single-pass type I membrane protein. It contains 1 thioredoxin domain. The exact function of TMX4 remains unknown.
Synonyms:	DJ971N18.2; PDIA14; TXNDC13
Note:	Immunogen Sequence Homology: Human: 100%; Pig: 79%
Protein Families:	Druggable Genome, Transmembrane

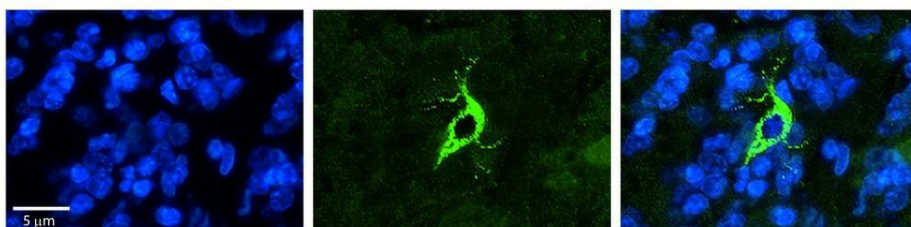


[View online »](#)

## Product images:



WB Suggested Anti-TXNDC13 Antibody Titration: 0.2-1 ug/ml; ELISA Titer: 1: 312500; Positive Control: 293T cell lysate. There is BioGPS gene expression data showing that TMX4 is expressed in HEK293T



Rabbit Anti-TMX4 Antibody; Formalin Fixed Paraffin Embedded Tissue: Human Pineal Tissue; Observed Staining: Cytoplasmic in cell bodies and processes of pinealocytes; Primary Antibody Concentration: 1: 100; Secondary Antibody: Donkey anti-Rabbit-Cy3; Secon