

## Product datasheet for **TA338457**

### CDH19 Rabbit Polyclonal Antibody

#### Product data:

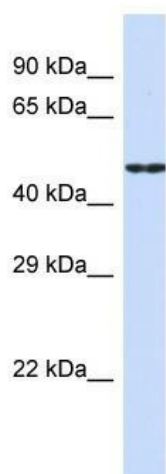
Product Type:	Primary Antibodies
Applications:	WB
Recommended Dilution:	WB
Reactivity:	Human
Host:	Rabbit
Isotype:	IgG
Clonality:	Polyclonal
Immunogen:	The immunogen for anti-CDH19 antibody is: synthetic peptide directed towards the middle region of Human CDH19. Synthetic peptide located within the following region: LLPYYVFEVFEETPQGSFVGVVSATDPDNRKSPIRYSITRSKVFINDNG
Formulation:	Liquid. Purified antibody supplied in 1x PBS buffer with 0.09% (w/v) sodium azide and 2% sucrose.
Purification:	Affinity Purified
Conjugation:	Unconjugated
Storage:	Store at -20°C as received.
Stability:	Stable for 12 months from date of receipt.
Predicted Protein Size:	53 kDa
Gene Name:	cadherin 19
Database Link:	<a href="#">NP_001257957</a> <a href="#">Entrez Gene 28513 Human</a> <a href="#">Q9H159</a>
Background:	This gene is one of three related type II cadherin genes situated in a cluster on chromosome 18. The encoded protein is a calcium dependent cell-cell adhesion glycoprotein containing five extracellular cadherin repeats. Loss of cadherins may be associated with cancer formation. Alternative splicing results in multiple transcript variants for this gene.
Synonyms:	CDH7; CDH7L2
Note:	Immunogen Sequence Homology: Human: 100%; Dog: 93%; Pig: 86%; Bovine: 86%; Rabbit: 86%; Guinea pig: 86%; Rat: 79%; Mouse: 79%



[View online »](#)

Protein Families: Druggable Genome, Transmembrane

### Product images:



Host: Rabbit; Target Name: CDH19; Sample Tissue: HepG2 Whole Cell lysates; Antibody Dilution: 1.0 ug/ml