

## Product datasheet for **TA338453**

### Reticulon 1 (RTN1) Rabbit Polyclonal Antibody

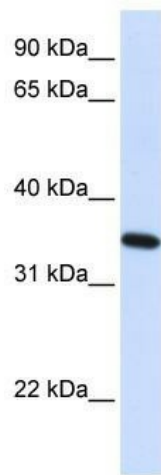
#### Product data:

Product Type:	Primary Antibodies
Applications:	WB
Recommended Dilution:	WB
Reactivity:	Human
Host:	Rabbit
Isotype:	IgG
Clonality:	Polyclonal
Immunogen:	The immunogen for anti-RTN1 antibody: synthetic peptide directed towards the N terminal of human RTN1. Synthetic peptide located within the following region: EEREAE L DSELI I E S C D A S S A S E E S P K R E Q D S P P M K P S A L D A I R E E T G V R
Formulation:	Liquid. Purified antibody supplied in 1x PBS buffer with 0.09% (w/v) sodium azide and 2% sucrose. <i>Note that this product is shipped as lyophilized powder to China customers.</i>
Purification:	Affinity Purified
Conjugation:	Unconjugated
Storage:	Store at -20°C as received.
Stability:	Stable for 12 months from date of receipt.
Predicted Protein Size:	39 kDa
Gene Name:	reticulon 1
Database Link:	<a href="#">NP_996739</a> <a href="#">Entrez Gene 6252 Human</a> <a href="#">Q16799</a>



[View online »](#)

<b>Background:</b>	Reticulons are associated with the endoplasmic reticulum, and are involved in neuroendocrine secretion or in membrane trafficking in neuroendocrine cells. This gene belongs to the family of reticulon encoding genes. Reticulons are associated with the endoplasmic reticulum, and are involved in neuroendocrine secretion or in membrane trafficking in neuroendocrine cells. Alternatively spliced transcript variants encoding different isoforms have been identified. Multiple promoters rather than alternative splicing of internal exons seem to be involved in this diversity.
<b>Synonyms:</b>	MGC133250; NSP
<b>Note:</b>	Immunogen Sequence Homology: Dog: 100%; Pig: 100%; Rat: 100%; Human: 100%; Mouse: 100%; Bovine: 100%; Zebrafish: 92%; Guinea pig: 92%
<b>Protein Families:</b>	Transmembrane

**Product images:**

WB Suggested Anti-RTN1 Antibody Titration: 0.2-1 ug/ml; ELISA Titer: 1: 62500; Positive Control: 293T cell lysate