

## Product datasheet for **TA338449**

### SCUBE2 Rabbit Polyclonal Antibody

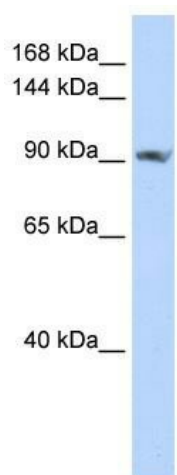
#### Product data:

Product Type:	Primary Antibodies
Applications:	WB
Recommended Dilution:	WB
Reactivity:	Human
Host:	Rabbit
Isotype:	IgG
Clonality:	Polyclonal
Immunogen:	The immunogen for anti-SCUBE2 antibody: synthetic peptide directed towards the C terminal of human SCUBE2. Synthetic peptide located within the following region: KTPEAWNMSECGGLCQPGEYSADGFAPCQLCALGTFQPEAGRTSCFPCGG
Formulation:	Liquid. Purified antibody supplied in 1x PBS buffer with 0.09% (w/v) sodium azide and 2% sucrose.
Purification:	Affinity Purified
Conjugation:	Unconjugated
Storage:	Store at -20°C as received.
Stability:	Stable for 12 months from date of receipt.
Predicted Protein Size:	110 kDa
Gene Name:	signal peptide, CUB domain and EGF like domain containing 2
Database Link:	<a href="#">NP_066025</a> <a href="#">Entrez Gene 57758 Human</a> <a href="#">Q9NQ36</a>
Background:	SCUBE2 contains 1 CUB domain and 9 EGF-like domains. The function of the SCUBE2 protein remains unknown.
Synonyms:	CEGB1; CEGF1; CEGP1
Note:	Immunogen Sequence Homology: Dog: 100%; Pig: 100%; Rat: 100%; Horse: 100%; Human: 100%; Rabbit: 100%; Guinea pig: 100%; Bovine: 93%; Mouse: 86%; Zebrafish: 83%
Protein Families:	Transmembrane



[View online »](#)

## Product images:



WB Suggested Anti-SCUBE2 Antibody Titration:  
0.2-1 ug/ml; ELISA Titer: 1: 312500; Positive  
Control: Hela cell lysate