

Product datasheet for **TA338447**

Netrin G1 ligand (LRRC4C) Rabbit Polyclonal Antibody

Product data:

Product Type:	Primary Antibodies
Applications:	WB
Recommended Dilution:	WB
Reactivity:	Human
Host:	Rabbit
Isotype:	IgG
Clonality:	Polyclonal
Immunogen:	The immunogen for anti-LRRC4C antibody: synthetic peptide directed towards the N terminal of human LRRC4C. Synthetic peptide located within the following region: LVVAGLVRAQTCPSVCSNQSFKVICVRKNLREVPDGISTNTRLLNLHE
Formulation:	Liquid. Purified antibody supplied in 1x PBS buffer with 0.09% (w/v) sodium azide and 2% sucrose. <i>Note that this product is shipped as lyophilized powder to China customers.</i>
Purification:	Affinity Purified
Conjugation:	Unconjugated
Storage:	Store at -20°C as received.
Stability:	Stable for 12 months from date of receipt.
Predicted Protein Size:	72 kDa
Gene Name:	leucine rich repeat containing 4C
Database Link:	NP_065980 Entrez Gene 57689 Human Q9HCJ2



[View online »](#)

Background: NGL1 (LRRC4C) is a specific binding partner for netrin G1 (NTNG1), which is a member of the netrin family of axon guidance molecules. It may promote neurite outgrowth of developing thalamic neurons. NGL1 is a specific binding partner for netrin G1 (NTNG1; MIM 608818), which is a member of the netrin family of axon guidance molecules (Lin et al., 2003 [PubMed 14595443]). [supplied by OMIM]. PRIMARYREFSEQ_SPAN PRIMARY_IDENTIFIER PRIMARY_SPAN COMP 1-528 AB046800.1 1-528 529-1824 AB046800.1 530-1825 1825-1827 BC041374.2 840-842 1828-1922 BC041374.2 844-938 1923-2926 BC041374.2 992-1995 2927-4054 AB046800.1 2928-4055

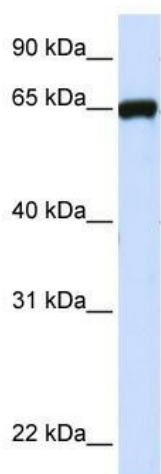
Synonyms: NGL-1; NGL1

Note: Immunogen Sequence Homology: Dog: 100%; Pig: 100%; Rat: 100%; Horse: 100%; Human: 100%; Mouse: 100%; Rabbit: 100%; Guinea pig: 100%; Bovine: 93%; Zebrafish: 79%

Protein Families: Druggable Genome, Transmembrane

Protein Pathways: Axon guidance

Product images:



WB Suggested Anti-LRRC4C Antibody Titration:
0.2-1 ug/ml; ELISA Titer: 1: 312500; Positive
Control: 293T cell lysate