

Product datasheet for **TA338446**

CACHD1 Rabbit Polyclonal Antibody

Product data:

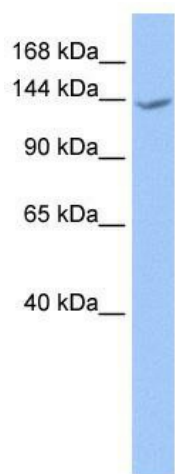
Product Type:	Primary Antibodies
Applications:	WB
Recommended Dilution:	WB
Reactivity:	Human
Host:	Rabbit
Isotype:	IgG
Clonality:	Polyclonal
Immunogen:	The immunogen for anti-CACHD1 antibody: synthetic peptide directed towards the N terminal of human CACHD1. Synthetic peptide located within the following region: HKFRCKGSYEHRSRPIYVSTVRPQSKHIVILDHGASVTDQLQIAKDAA
Formulation:	Liquid. Purified antibody supplied in 1x PBS buffer with 0.09% (w/v) sodium azide and 2% sucrose. <i>Note that this product is shipped as lyophilized powder to China customers.</i>
Purification:	Affinity Purified
Conjugation:	Unconjugated
Storage:	Store at -20°C as received.
Stability:	Stable for 12 months from date of receipt.
Predicted Protein Size:	137 kDa
Gene Name:	cache domain containing 1
Database Link:	NP_065976 Entrez Gene 57685 Human Q5VU97
Background:	CACHD1 belongs to the calcium channel subunit alpha-2/delta family. It contains 2 cache domains and 1 VWFA domain. CACHD1 may regulate voltage-dependent calcium channels .
Synonyms:	RP4-655E10.1
Note:	Immunogen Sequence Homology: Dog: 100%; Pig: 100%; Rat: 100%; Horse: 100%; Human: 100%; Mouse: 100%; Bovine: 100%; Rabbit: 100%; Guinea pig: 100%; Zebrafish: 77%



[View online »](#)

Protein Families: Druggable Genome, Transmembrane

Product images:



WB Suggested Anti-CACHD1 Antibody Titration:
0.2-1 ug/ml; Positive Control: Human brain