

## Product datasheet for **TA338443**

### ISLR2 Rabbit Polyclonal Antibody

#### Product data:

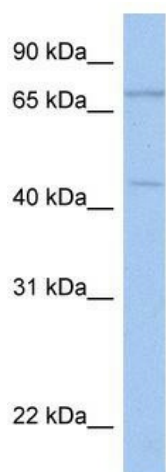
Product Type:	Primary Antibodies
Applications:	WB
Recommended Dilution:	WB
Reactivity:	Human
Host:	Rabbit
Isotype:	IgG
Clonality:	Polyclonal
Immunogen:	The immunogen for anti-ISLR2 antibody: synthetic peptide directed towards the N terminal of human ISLR2. Synthetic peptide located within the following region: PFHCGCGLVWLQAWAASTRVSLPEPDSIACASPPALQGVPVYRLPALPCA
Formulation:	Liquid. Purified antibody supplied in 1x PBS buffer with 0.09% (w/v) sodium azide and 2% sucrose. <i>Note that this product is shipped as lyophilized powder to China customers.</i>
Purification:	Affinity Purified
Conjugation:	Unconjugated
Storage:	Store at -20°C as received.
Stability:	Stable for 12 months from date of receipt.
Predicted Protein Size:	79 kDa
Gene Name:	immunoglobulin superfamily containing leucine-rich repeat 2
Database Link:	<a href="#">NP_065902</a> <a href="#">Entrez Gene 57611 Human</a> <a href="#">Q6UXK2</a>
Background:	ISLR2 is a single-pass membrane protein. It contains 1 Ig-like (immunoglobulin-like) domain and 5 LRR (leucine-rich) repeats. The exact function of ISLR2 remains unknown.
Synonyms:	LINX
Note:	Immunogen Sequence Homology: Dog: 100%; Pig: 100%; Rat: 100%; Human: 100%; Mouse: 100%; Bovine: 100%; Rabbit: 100%; Guinea pig: 100%



[View online »](#)

Protein Families: Druggable Genome, Transmembrane

**Product images:**



WB Suggested Anti-ISLR2 Antibody Titration: 0.2-1 ug/ml; Positive Control: Hela cell lysate