

## Product datasheet for **TA338442**

### Kcnt1 Rabbit Polyclonal Antibody

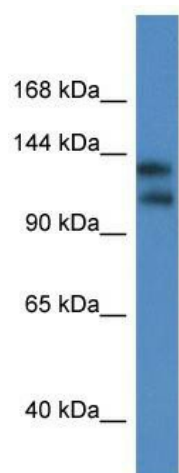
#### Product data:

Product Type:	Primary Antibodies
Applications:	WB
Recommended Dilution:	WB
Reactivity:	Mouse
Host:	Rabbit
Isotype:	IgG
Clonality:	Polyclonal
Immunogen:	The immunogen for anti-Kcnt1 antibody: synthetic peptide corresponding to a region of Mouse. Synthetic peptide located within the following region: CDLLSDQSEDEVTPSDDEGLSVVEYVKGYPNPSYIGSSPTLCHLLPVKA
Formulation:	Liquid. Purified antibody supplied in 1x PBS buffer with 0.09% (w/v) sodium azide and 2% sucrose. <i>Note that this product is shipped as lyophilized powder to China customers.</i>
Purification:	Affinity Purified
Conjugation:	Unconjugated
Storage:	Store at -20°C as received.
Stability:	Stable for 12 months from date of receipt.
Predicted Protein Size:	140 kDa
Gene Name:	potassium channel, subfamily T, member 1
Database Link:	<a href="#">NP_780671</a> <a href="#">Entrez Gene 227632 Mouse</a> <a href="#">Q6ZPR4</a>
Background:	The function of this protein remains unknown.
Synonyms:	bA100C15.2; FLJ41282; KCa4.1; KIAA1422; SLACK
Note:	Immunogen Sequence Homology: Rat: 100%; Human: 100%; Mouse: 100%; Dog: 93%; Horse: 93%; Bovine: 86%; Pig: 79%; Rabbit: 79%; Guinea pig: 79%



[View online »](#)

## Product images:



WB Suggested Anti-Kcnt1 Antibody; Titration: 1.0 ug/ml; Positive Control: Mouse Heart