

Product datasheet for **TA338441**

SEMA6A Rabbit Polyclonal Antibody

Product data:

Product Type:	Primary Antibodies
Applications:	WB
Recommended Dilution:	WB
Reactivity:	Human
Host:	Rabbit
Isotype:	IgG
Clonality:	Polyclonal
Immunogen:	The immunogen for anti-SEMA6A antibody: synthetic peptide directed towards the middle region of human SEMA6A. Synthetic peptide located within the following region: ERVPKPRPGCCAGSSSLERYATSNEFPDDLNFIKTHPLMDEAVPSIFNR
Formulation:	Liquid. Purified antibody supplied in 1x PBS buffer with 0.09% (w/v) sodium azide and 2% sucrose. <i>Note that this product is shipped as lyophilized powder to China customers.</i>
Purification:	Affinity Purified
Conjugation:	Unconjugated
Storage:	Store at -20°C as received.
Stability:	Stable for 12 months from date of receipt.
Predicted Protein Size:	114 kDa
Gene Name:	semaphorin 6A
Database Link:	NP_065847 Entrez Gene 57556 Human Q9H2E6
Background:	SEMA6A can act as repulsive axon guidance cues. SEMA6A may play a role in channeling sympathetic axons into the sympathetic chains and controlling the temporal sequence of sympathetic target innervation.
Synonyms:	HT018; SEMA; SEMA6A1; SEMAQ; VIA
Note:	Immunogen Sequence Homology: Human: 100%; Pig: 93%; Rat: 93%; Horse: 93%; Mouse: 93%; Guinea pig: 93%; Dog: 86%; Bovine: 86%; Rabbit: 86%

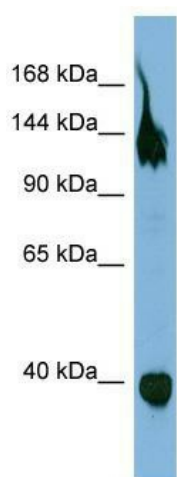


[View online »](#)

Protein Families: Transmembrane

Protein Pathways: Axon guidance

Product images:



WB Suggested Anti-SEMA6A Antibody Titration:
0.2-1 ug/ml; ELISA Titer: 1: 312500; Positive
Control: OVCAR-3 cell lysate SEMA6A is supported
by BioGPS gene expression data to be expressed
in OVCAR3