

Product datasheet for **TA338440**

Nceh1 Rabbit Polyclonal Antibody

Product data:

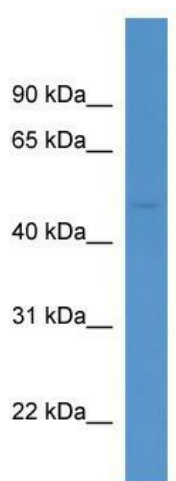
Product Type:	Primary Antibodies
Applications:	WB
Recommended Dilution:	WB
Reactivity:	Human, Mouse
Host:	Rabbit
Isotype:	IgG
Clonality:	Polyclonal
Immunogen:	The immunogen for anti-Nceh1 antibody: synthetic peptide corresponding to a region of Mouse. Synthetic peptide located within the following region: LQALDFNTPSYQQSMNTPILPRHVMVRYWLDYFKGNDFVEAMIVNNHTS
Formulation:	Liquid. Purified antibody supplied in 1x PBS buffer with 0.09% (w/v) sodium azide and 2% sucrose. <i>Note that this product is shipped as lyophilized powder to China customers.</i>
Purification:	Affinity Purified
Conjugation:	Unconjugated
Storage:	Store at -20°C as received.
Stability:	Stable for 12 months from date of receipt.
Predicted Protein Size:	46 kDa
Gene Name:	neutral cholesterol ester hydrolase 1
Database Link:	NP_848887 Entrez Gene 57552 Human Entrez Gene 320024 Mouse Q8BLF1
Background:	Nceh1 is hydrolyzes 2-acetyl monoalkylglycerol ether, the penultimate precursor of the pathway for de novo synthesis of platelet-activating factor. It may be responsible for cholesterol ester hydrolysis in macrophages. It also involved in organ detoxification by hydrolyzing exogenous organophosphorus compounds.
Synonyms:	AADACL1; NCEH



[View online »](#)

Note: Immunogen Sequence Homology: Dog: 100%; Pig: 100%; Rat: 100%; Horse: 100%; Human: 100%; Mouse: 100%; Bovine: 100%; Rabbit: 100%; Zebrafish: 100%; Guinea pig: 100%

Product images:



WB Suggested Anti-Nceh1 Antibody Titration: 0.2-1 ug/ml; ELISA Titer: 1: 312500; Positive Control: Mouse Kidney