

## Product datasheet for **TA338439**

### IGSF9 Rabbit Polyclonal Antibody

#### Product data:

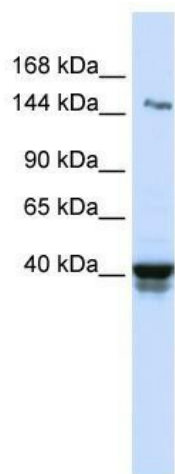
Product Type:	Primary Antibodies
Applications:	WB
Recommended Dilution:	WB
Reactivity:	Human
Host:	Rabbit
Isotype:	IgG
Clonality:	Polyclonal
Immunogen:	The immunogen for anti-IGSF9 antibody: synthetic peptide directed towards the N terminal of human IGSF9. Synthetic peptide located within the following region: SPRIDPDYVGRVRLQKGASLQIEGLRVEDQGWYECRVFFLDQHIPPEDDFA
Formulation:	Liquid. Purified antibody supplied in 1x PBS buffer with 0.09% (w/v) sodium azide and 2% sucrose.
Purification:	Affinity Purified
Conjugation:	Unconjugated
Storage:	Store at -20°C as received.
Stability:	Stable for 12 months from date of receipt.
Predicted Protein Size:	125 kDa
Gene Name:	immunoglobulin superfamily member 9
Database Link:	<a href="#">NP_065840</a> <a href="#">Entrez Gene 57549 Human</a> <a href="#">Q9P2J2</a>
Background:	IGSF9 belongs to the immunoglobulin superfamily, turtle family. It contains 2 fibronectin type-III domains and 5 Ig-like (immunoglobulin-like) domains. It functions in dendrite outgrowth and synapse maturation.
Synonyms:	FP18798; IGSF9A; Nrt1
Note:	Immunogen Sequence Homology: Dog: 100%; Horse: 100%; Human: 100%; Bovine: 100%; Pig: 93%; Rat: 93%; Mouse: 93%; Rabbit: 93%; Guinea pig: 93%



[View online »](#)

Protein Families: Transmembrane

### Product images:



WB Suggested Anti-IGSF9 Antibody Titration: 0.2-1 ug/ml; ELISA Titer: 1: 62500; Positive Control: Human Lung