

Product datasheet for **TA338438**

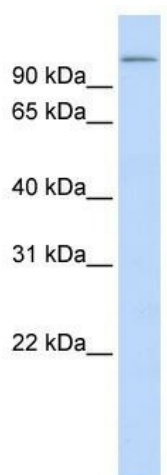
TXNDC16 Rabbit Polyclonal Antibody

Product data:

Product Type:	Primary Antibodies
Applications:	WB
Recommended Dilution:	WB
Reactivity:	Human
Host:	Rabbit
Isotype:	IgG
Clonality:	Polyclonal
Immunogen:	The immunogen for anti-TXNDC16 antibody: synthetic peptide directed towards the N terminal of human TXNDC16. Synthetic peptide located within the following region: EVAEDPQQVSTVHLQLGLPLVFIVSQATYEADRRRTAEWVAVRLLGKAGV
Formulation:	Liquid. Purified antibody supplied in 1x PBS buffer with 0.09% (w/v) sodium azide and 2% sucrose.
Purification:	Affinity Purified
Conjugation:	Unconjugated
Storage:	Store at -20°C as received.
Stability:	Stable for 12 months from date of receipt.
Predicted Protein Size:	93 kDa
Gene Name:	thioredoxin domain containing 16
Database Link:	NP_065835 Entrez Gene 57544 Human Q9P2K2
Background:	TXNDC16 contains 1 thioredoxin domain. The exact function of TXNDC16 remains unknown.
Synonyms:	ERp90; KIAA1344
Note:	Immunogen Sequence Homology: Pig: 100%; Rat: 100%; Horse: 100%; Human: 100%; Mouse: 100%; Guinea pig: 100%; Dog: 86%; Bovine: 86%; Rabbit: 86%
Protein Families:	Druggable Genome, Transmembrane



[View online »](#)

Product images:

WB Suggested Anti-TXNDC16 Antibody Titration:
0.2-1 ug/ml; ELISA Titer: 1: 312500; Positive
Control: Human brain