

Product datasheet for **TA338437**

Estrogen induced gene 121 protein (KIAA1324) Rabbit Polyclonal Antibody

Product data:

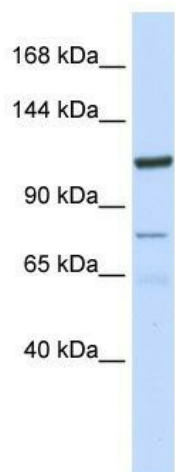
Product Type:	Primary Antibodies
Applications:	WB
Recommended Dilution:	WB
Reactivity:	Human
Host:	Rabbit
Isotype:	IgG
Clonality:	Polyclonal
Immunogen:	The immunogen for anti-KIAA1324 antibody: synthetic peptide directed towards the N terminal of human KIAA1324. Synthetic peptide located within the following region: PCAEGRYSLGTGIRFDEWDELPHGFASLSANMELDDSAESTGNCTSSKW
Formulation:	Liquid. Purified antibody supplied in 1x PBS buffer with 0.09% (w/v) sodium azide and 2% sucrose. <i>Note that this product is shipped as lyophilized powder to China customers.</i>
Purification:	Affinity Purified
Conjugation:	Unconjugated
Storage:	Store at -20°C as received.
Stability:	Stable for 12 months from date of receipt.
Predicted Protein Size:	111 kDa
Gene Name:	KIAA1324
Database Link:	NP_065826 Entrez Gene 57535 Human Q6UXG2
Background:	KIAA1324 belongs to the UPF0577 family. It may play a role as a marker of hyperestrogenic state and estrogen-related type I endometrial carcinoma.
Synonyms:	EIG121
Note:	Immunogen Sequence Homology: Dog: 100%; Pig: 100%; Rat: 100%; Horse: 100%; Human: 100%; Mouse: 100%; Bovine: 100%; Rabbit: 100%; Guinea pig: 100%; Zebrafish: 82%



[View online »](#)

Protein Families: Transmembrane

Product images:



WB Suggested Anti-KIAA1324 Antibody Titration:
0.2-1 ug/ml; ELISA Titer: 1: 312500; Positive
Control: Hela cell lysate