

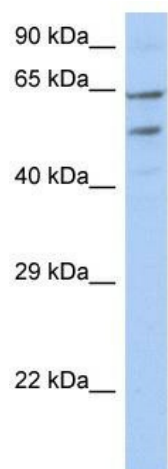
Product datasheet for **TA338431**

TMCC3 Rabbit Polyclonal Antibody

Product data:

Product Type:	Primary Antibodies
Applications:	WB
Recommended Dilution:	WB
Reactivity:	Human
Host:	Rabbit
Isotype:	IgG
Clonality:	Polyclonal
Immunogen:	The immunogen for anti-TMCC3 antibody: synthetic peptide directed towards the N terminal of human TMCC3. Synthetic peptide located within the following region: MPGSDTALTVDRTYSDPGRHHRCKSRVERHDMNTLSLPLNIRRGSDTNL
Formulation:	Liquid. Purified antibody supplied in 1x PBS buffer with 0.09% (w/v) sodium azide and 2% sucrose.
Purification:	Affinity Purified
Conjugation:	Unconjugated
Storage:	Store at -20°C as received.
Stability:	Stable for 12 months from date of receipt.
Predicted Protein Size:	54 kDa
Gene Name:	transmembrane and coiled-coil domain family 3
Database Link:	NP_065749 Entrez Gene 57458 Human Q9ULS5
Background:	The specific function of the protein remains unknown.
Synonyms:	KIAA1145
Note:	Immunogen Sequence Homology: Rat: 100%; Mouse: 100%; Bovine: 100%; Human: 93%
Protein Families:	Transmembrane


[View online »](#)

Product images:


WB Suggested Anti-TMCC3 Antibody Titration:
 0.2-1 ug/ml; ELISA Titer: 1: 62500; Positive
 Control: OVCAR-3 cell lysate