

Product datasheet for **TA338430**

GALNTL1 (GALNT16) Rabbit Polyclonal Antibody

Product data:

Product Type:	Primary Antibodies
Applications:	WB
Recommended Dilution:	WB
Reactivity:	Human
Host:	Rabbit
Isotype:	IgG
Clonality:	Polyclonal
Immunogen:	The immunogen for anti-GALNT16 antibody: synthetic peptide directed towards the N terminal of human GALNT16. Synthetic peptide located within the following region: LSAKQLKAGEDPYRQHAFNQLESCLKSPDRPIRDTRHYSCPSVSYSSDLP
Formulation:	Liquid. Purified antibody supplied in 1x PBS buffer with 0.09% (w/v) sodium azide and 2% sucrose. <i>Note that this product is shipped as lyophilized powder to China customers.</i>
Purification:	Affinity Purified
Conjugation:	Unconjugated
Storage:	Store at -20°C as received.
Stability:	Stable for 12 months from date of receipt.
Predicted Protein Size:	63 kDa
Gene Name:	polypeptide N-acetylgalactosaminyltransferase 16
Database Link:	NP_065743 Entrez Gene 57452 Human Q8N428
Background:	GALNT16 belongs to the glycosyltransferase 2 family, GalNAc-T subfamily. It contains 1 ricin B-type lectin domain. GALNT16 may catalyze the initial reaction in O-linked oligosaccharide biosynthesis, the transfer of an N-acetyl-D-galactosamine residue to a serine or threonine residue on the protein receptor.
Synonyms:	GalNAc-T16; GALNACT16; GALNTL1



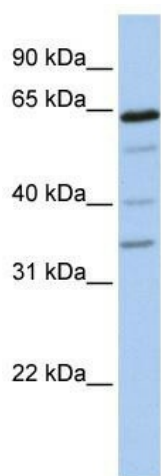
[View online »](#)

Note: Immunogen Sequence Homology: Pig: 100%; Rat: 100%; Horse: 100%; Human: 100%; Bovine: 100%; Rabbit: 100%; Guinea pig: 100%; Dog: 93%; Mouse: 93%

Protein Families: Transmembrane

Protein Pathways: Metabolic pathways, O-Glycan biosynthesis

Product images:



WB Suggested Anti-GALNT16 Antibody Titration:
0.2-1 ug/ml; Positive Control: 721_B cell lysate