

Product datasheet for **TA338429**

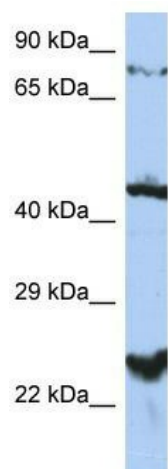
MRS2 Rabbit Polyclonal Antibody

Product data:

Product Type:	Primary Antibodies
Applications:	WB
Recommended Dilution:	WB
Reactivity:	Human
Host:	Rabbit
Isotype:	IgG
Clonality:	Polyclonal
Immunogen:	The immunogen for anti-MRS2 antibody: synthetic peptide directed towards the middle region of human MRS2. Synthetic peptide located within the following region: LDALVDPKHSSVDRSKLHILLQNGKSLSELETDIKIFKESILEILDEEEL
Formulation:	Liquid. Purified antibody supplied in 1x PBS buffer with 0.09% (w/v) sodium azide and 2% sucrose.
Purification:	Affinity Purified
Conjugation:	Unconjugated
Storage:	Store at -20°C as received.
Stability:	Stable for 12 months from date of receipt.
Predicted Protein Size:	50 kDa
Gene Name:	MRS2, magnesium transporter
Database Link:	NP_065713 Entrez Gene 57380 Human Q9HD23
Background:	MRS2 is a magnesium transporter that may mediate the influx of magnesium into the mitochondrial matrix.
Synonyms:	HPT; MRS2L
Note:	Immunogen Sequence Homology: Pig: 100%; Rat: 100%; Horse: 100%; Human: 100%; Mouse: 100%; Bovine: 100%; Dog: 93%; Goat: 93%; Rabbit: 93%; Guinea pig: 93%
Protein Families:	Transcription Factors, Transmembrane



[View online »](#)

Product images:

WB Suggested Anti-MRS2 Antibody Titration: 0.2-1 ug/ml; ELISA Titer: 1: 312500; Positive Control: PANC1 cell lysate