

## Product datasheet for **TA338428**

### JPH3 Rabbit Polyclonal Antibody

#### Product data:

Product Type:	Primary Antibodies
Applications:	WB
Recommended Dilution:	WB
Reactivity:	Human
Host:	Rabbit
Isotype:	IgG
Clonality:	Polyclonal
Immunogen:	The immunogen for anti-JPH3 antibody: synthetic peptide directed towards the N terminal of human JPH3. Synthetic peptide located within the following region: SSGGRFNFDDGGSYCGGWEDGKAHGHGVCTGPKGQGEYTGWSHGFVVLG
Formulation:	Liquid. Purified antibody supplied in 1x PBS buffer with 0.09% (w/v) sodium azide and 2% sucrose. <i>Note that this product is shipped as lyophilized powder to China customers.</i>
Purification:	Affinity Purified
Conjugation:	Unconjugated
Storage:	Store at -20°C as received.
Stability:	Stable for 12 months from date of receipt.
Predicted Protein Size:	81 kDa
Gene Name:	junctophilin 3
Database Link:	<a href="#">NP_065706</a> <a href="#">Entrez Gene 57338 Human</a> <a href="#">Q8WXH2</a>



[View online »](#)

**Background:**

Junctional complexes between the plasma membrane and endoplasmic/sarcoplasmic reticulum are a common feature of all excitable cell types and mediate cross talk between cell surface and intracellular ion channels. JPH3 is a component of junctional complexes and is composed of a C-terminal hydrophobic segment spanning the endoplasmic/sarcoplasmic reticulum membrane and a remaining cytoplasmic domain that shows specific affinity for the plasma membrane. CAG/CTG repeat expansions at the Huntington's disease (HD)-like 2 locus have been identified in the gene that encodes JPH3 protein. Junctional complexes between the plasma membrane and endoplasmic/sarcoplasmic reticulum are a common feature of all excitable cell types and mediate cross talk between cell surface and intracellular ion channels. The protein encoded by this gene is a component of junctional complexes and is composed of a C-terminal hydrophobic segment spanning the endoplasmic/sarcoplasmic reticulum membrane and a remaining cytoplasmic domain that shows specific affinity for the plasma membrane. CAG/CTG repeat expansions at the Huntington's disease (HD)-like 2 locus have been identified in this gene, which is a member of the junctophilin gene family. Publication Note: This RefSeq record includes a subset of the publications that are available for this gene. Please see the Entrez Gene record to access additional publications.

**Synonyms:**

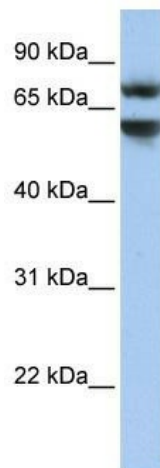
CAGL237; HDL2; JP-3; JP3; TNRC22

**Note:**

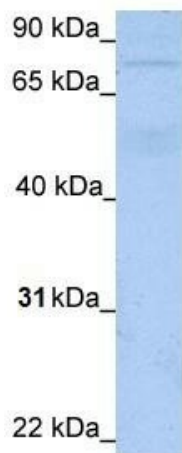
Immunogen Sequence Homology: Dog: 100%; Pig: 100%; Rat: 100%; Horse: 100%; Human: 100%; Mouse: 100%; Bovine: 100%; Zebrafish: 93%; Guinea pig: 93%; Rabbit: 85%

**Protein Families:**

Druggable Genome, Transmembrane

**Product images:**

WB Suggested Anti-JPH3 Antibody Titration: 0.2-1 ug/ml; Positive Control: HepG2 cell lysate



Host: Rabbit

Target Name: JPH3

Sample Tissue: **Human Brain Cell Lysate**

Antibody Dilution: 1.0 $\mu$ g/ml

WB Suggested Anti-JPH3 Antibody Titration: 1.0 ug/ml; Positive Control: Human Brain cell lysate