

Product datasheet for **TA338425**

ADCY2 Rabbit Polyclonal Antibody

Product data:

Product Type:	Primary Antibodies
Applications:	WB
Recommended Dilution:	WB
Reactivity:	Human
Host:	Rabbit
Isotype:	IgG
Clonality:	Polyclonal
Immunogen:	The immunogen for anti-ADCY2 antibody: synthetic peptide directed towards the middle region of human ADCY2. Synthetic peptide located within the following region: FLSDSEETIPPTANTTNTSFSASNNQVAILRAQNLFFLPYFIYSCILGLI
Formulation:	Liquid. Purified antibody supplied in 1x PBS buffer with 0.09% (w/v) sodium azide and 2% sucrose. <i>Note that this product is shipped as lyophilized powder to China customers.</i>
Purification:	Affinity Purified
Conjugation:	Unconjugated
Storage:	Store at -20°C as received.
Stability:	Stable for 12 months from date of receipt.
Predicted Protein Size:	123 kDa
Gene Name:	adenylate cyclase 2 (brain)
Database Link:	NP_065433 Entrez Gene 108 Human Q08462
Background:	This gene encodes a member of the family of adenylate cyclases, which are membrane-associated enzymes that catalyze the formation of the secondary messenger cyclic adenosine monophosphate (cAMP). This enzyme is insensitive to Ca(2+)/calmodulin, and is stimulated by the G protein beta and gamma subunit complex.
Synonyms:	AC2; HBAC2



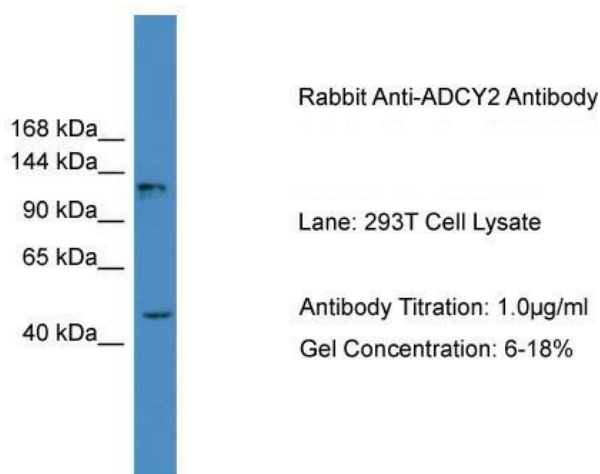
[View online »](#)

Note: Immunogen Sequence Homology: Human: 100%; Dog: 86%; Pig: 86%; Horse: 79%; Bovine: 79%; Rabbit: 79%

Protein Families: Druggable Genome, Transmembrane

Protein Pathways: Calcium signaling pathway, Chemokine signaling pathway, Dilated cardiomyopathy, Gap junction, GnRH signaling pathway, Melanogenesis, Oocyte meiosis, Progesterone-mediated oocyte maturation, Purine metabolism, Vascular smooth muscle contraction

Product images:



WB Suggested Anti-ADCY2 Antibody Titration: 0.2-1 μ g/ml; ELISA Titer: 1: 62500; Positive Control: 293T cell lysate. There is BioGPS gene expression data showing that ADCY2 is expressed in HEK293T