

Product datasheet for **TA338424**

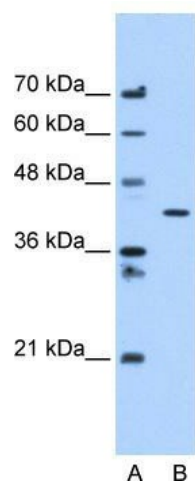
APMAP Rabbit Polyclonal Antibody

Product data:

Product Type:	Primary Antibodies
Applications:	WB
Recommended Dilution:	WB
Reactivity:	Human
Host:	Rabbit
Isotype:	IgG
Clonality:	Polyclonal
Immunogen:	The immunogen for anti-APMAP antibody: synthetic peptide directed towards the C terminal of human APMAP. Synthetic peptide located within the following region: QETVMKFVPRYSLVLELSDSGAFRRSLHDPDGLVATYISEVHEHDGHLYL
Formulation:	Liquid. Purified antibody supplied in 1x PBS buffer with 0.09% (w/v) sodium azide and 2% sucrose. <i>Note that this product is shipped as lyophilized powder to China customers.</i>
Purification:	Protein A purified
Conjugation:	Unconjugated
Storage:	Store at -20°C as received.
Stability:	Stable for 12 months from date of receipt.
Predicted Protein Size:	46 kDa
Gene Name:	adipocyte plasma membrane associated protein
Database Link:	NP_065392 Entrez Gene 57136 Human Q9HDC9
Background:	APMAP may play a role in adipocyte differentiation.
Synonyms:	BSCv; C20orf3
Note:	Immunogen Sequence Homology: Pig: 100%; Rat: 100%; Horse: 100%; Human: 100%; Mouse: 100%; Rabbit: 100%; Guinea pig: 93%; Dog: 92%; Bovine: 77%
Protein Families:	Transmembrane



[View online »](#)

Product images:

WB Suggested Anti-APMAP Antibody Titration: 1.25 ug/ml; Positive Control: HepG2 cell lysate. APMAP is supported by BioGPS gene expression data to be expressed in HepG2