

## Product datasheet for **TA338420**

### ATP10D Rabbit Polyclonal Antibody

#### Product data:

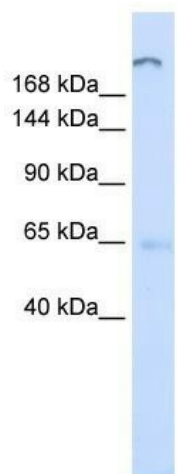
Product Type:	Primary Antibodies
Applications:	WB
Recommended Dilution:	WB
Reactivity:	Human
Host:	Rabbit
Isotype:	IgG
Clonality:	Polyclonal
Immunogen:	The immunogen for anti-ATP10D antibody: synthetic peptide directed towards the C terminal of human ATP10D. Synthetic peptide located within the following region: LFTSAPPVIYGVLEKDVSAETLMQLPELYRSGQKSEAYLPHTFWITLLDA
Formulation:	Liquid. Purified antibody supplied in 1x PBS buffer with 0.09% (w/v) sodium azide and 2% sucrose. <i>Note that this product is shipped as lyophilized powder to China customers.</i>
Purification:	Affinity Purified
Conjugation:	Unconjugated
Storage:	Store at -20°C as received.
Stability:	Stable for 12 months from date of receipt.
Predicted Protein Size:	160 kDa
Gene Name:	ATPase phospholipid transporting 10D (putative)
Database Link:	<a href="#">NP_065186</a> <a href="#">Entrez Gene 57205 Human Q9P241</a>
Background:	ATP10D is a multi-pass membrane protein. It belongs to the cation transport ATPase (P-type) family, type IV subfamily. The exact function of ATP10D remains unknown.
Synonyms:	ATPVD
Note:	Immunogen Sequence Homology: Human: 100%; Pig: 93%; Dog: 92%; Rat: 92%; Horse: 92%; Rabbit: 92%; Guinea pig: 92%; Bovine: 86%; Mouse: 79%



[View online »](#)

Protein Families: Transmembrane

### Product images:



WB Suggested Anti-ATP10D Antibody Titration:  
0.2-1 ug/ml; ELISA Titer: 1: 1562500; Positive  
Control: Human Liver