

Product datasheet for **TA338419**

DOLPP1 Rabbit Polyclonal Antibody

Product data:

Product Type:	Primary Antibodies
Applications:	WB
Recommended Dilution:	WB
Reactivity:	Human
Host:	Rabbit
Isotype:	IgG
Clonality:	Polyclonal
Immunogen:	The immunogen for anti-DOLPP1 antibody: synthetic peptide directed towards the N terminal of human DOLPP1. Synthetic peptide located within the following region: AADGQCCLPASWRPVTLTHVEYPAGDLSGHLLAYLSLSPVFVIVGFVTLI
Formulation:	Liquid. Purified antibody supplied in 1x PBS buffer with 0.09% (w/v) sodium azide and 2% sucrose. <i>Note that this product is shipped as lyophilized powder to China customers.</i>
Purification:	Affinity Purified
Conjugation:	Unconjugated
Storage:	Store at -20°C as received.
Stability:	Stable for 12 months from date of receipt.
Predicted Protein Size:	27 kDa
Gene Name:	dolichyldiphosphatase 1
Database Link:	NP_065171 Entrez Gene 57171 Human Q86YN1
Background:	DOLPP1 is a multi-pass membrane protein. By similarity. It belongs to the dolichyldiphosphatase family. It is required for efficient N-glycosylation and is necessary for maintaining optimal levels of dolichol-linked oligosaccharides. DOLPP1 hydrolyzes dolichyl pyrophosphate at a very high rate and dolichyl monophosphate at a much lower rate. It does not act on phosphatidate.
Synonyms:	LSFR2



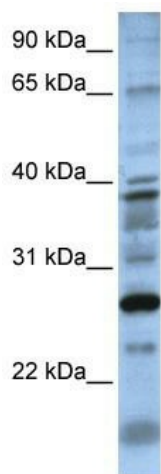
[View online »](#)

Note: Immunogen Sequence Homology: Pig: 100%; Rat: 100%; Horse: 100%; Human: 100%; Mouse: 100%; Bovine: 100%; Guinea pig: 100%; Dog: 93%; Zebrafish: 86%

Protein Families: Druggable Genome, Transmembrane

Protein Pathways: N-Glycan biosynthesis

Product images:



WB Suggested Anti-DOLPP1 Antibody Titration:
0.2-1 ug/ml; Positive Control: 721_B cell lysate.
DOLPP1 is supported by BioGPS gene expression
data to be expressed in 721_B