

Product datasheet for **TA338418**

TMEM63C Rabbit Polyclonal Antibody

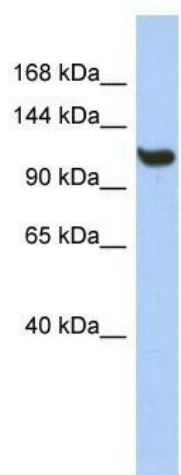
Product data:

Product Type:	Primary Antibodies
Applications:	WB
Recommended Dilution:	WB
Reactivity:	Human
Host:	Rabbit
Isotype:	IgG
Clonality:	Polyclonal
Immunogen:	The immunogen for anti-TMEM63C antibody: synthetic peptide directed towards the middle region of human TMEM63C. Synthetic peptide located within the following region: EEEIQTVFDMEPSSTSSTPTSLLYVATVLQPELNLTPASSPARHTYGTM
Formulation:	Liquid. Purified antibody supplied in 1x PBS buffer with 0.09% (w/v) sodium azide and 2% sucrose. <i>Note that this product is shipped as lyophilized powder to China customers.</i>
Purification:	Affinity Purified
Conjugation:	Unconjugated
Storage:	Store at -20°C as received.
Stability:	Stable for 12 months from date of receipt.
Predicted Protein Size:	93 kDa
Gene Name:	transmembrane protein 63C
Database Link:	NP_065164 Entrez Gene 57156 Human Q9P1W3
Background:	The specific function of the protein remains unknown.
Synonyms:	C14orf171; CSC1; hsCSC1
Note:	Immunogen Sequence Homology: Rat: 100%; Human: 100%; Mouse: 100%; Pig: 93%; Horse: 93%; Rabbit: 93%; Guinea pig: 93%; Bovine: 92%; Dog: 86%
Protein Families:	Transmembrane



[View online »](#)

Product images:



WB Suggested Anti-TMEM63C Antibody Titration:
0.2-1 ug/ml; ELISA Titer: 1: 62500; Positive
Control: THP-1 cell lysate