

Product datasheet for **TA338417**

RHBG Rabbit Polyclonal Antibody

Product data:

Product Type:	Primary Antibodies
Applications:	IHC, WB
Recommended Dilution:	WB, IHC
Reactivity:	Human
Host:	Rabbit
Isotype:	IgG
Clonality:	Polyclonal
Immunogen:	The immunogen for anti-RHBG antibody: synthetic peptide directed towards the C terminal of human RHBG. Synthetic peptide located within the following region: LATHEAYGDGLESVFPLIAEGQRSATSQAMHQLFGLFVTLMFASVGGGLG
Formulation:	Liquid. Purified antibody supplied in 1x PBS buffer with 0.09% (w/v) sodium azide and 2% sucrose.
Purification:	Affinity Purified
Conjugation:	Unconjugated
Storage:	Store at -20°C as received.
Stability:	Stable for 12 months from date of receipt.
Predicted Protein Size:	47 kDa
Gene Name:	Rh family B glycoprotein (gene/pseudogene)
Database Link:	NP_065140 Entrez Gene 57127 Human Q9H310



[View online »](#)

Background:

RHBG and RHCG are non-erythroid members of the Rhesus (Rh) protein family that are mainly expressed in the kidney and belong to the methylammonium-ammonium permease/ammonia transporters superfamily. Rh family proteins are all predicted to be transmembrane proteins with 12 membrane spanning domains and intracytoplasmic N- and C-termini. RHBG and RHCG are non-erythroid members of the Rhesus (Rh) protein family that are mainly expressed in the kidney and belong to the methylammonium-ammonium permease/ammonia transporters superfamily. Rh family proteins are all predicted to be transmembrane proteins with 12 membrane spanning domains and intracytoplasmic N- and C-termini. PRIMARYREFSEQ_SPAN PRIMARY_IDENTIFIER PRIMARY_SPAN COMP 1-1309 AF193807.1 1-1309 1310-1310 AL139130.28 4265-4265 1311-1806 AF193807.1 1310-1805

Synonyms:

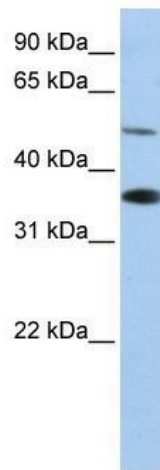
SLC42A2

Note:

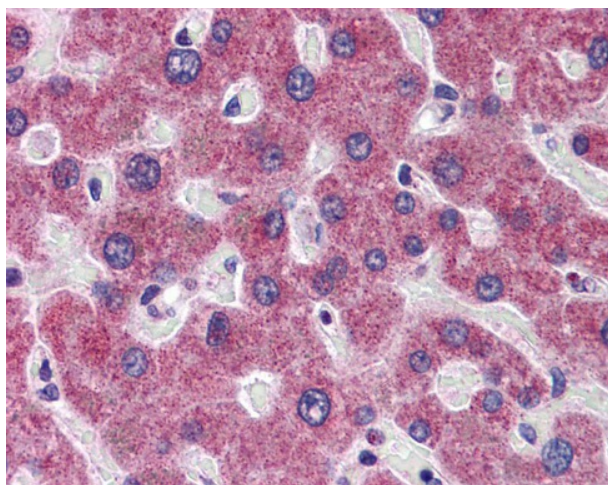
Immunogen Sequence Homology: Pig: 100%; Human: 100%; Bovine: 100%; Rabbit: 100%; Guinea: 100%; Rat: 93%; Mouse: 93%; Horse: 86%; Dog: 79%

Protein Families:

Transmembrane

Product images:

WB Suggested Anti-RHBG Antibody Titration: 0.2-1 ug/ml; Positive Control: HepG2 cell lysate. RHBG is supported by BioGPS gene expression data to be expressed in HepG2



Liver