

Product datasheet for **TA338416**

RHBG Rabbit Polyclonal Antibody

Product data:

Product Type:	Primary Antibodies
Applications:	WB
Recommended Dilution:	WB
Reactivity:	Human
Host:	Rabbit
Isotype:	IgG
Clonality:	Polyclonal
Immunogen:	The immunogen for anti-RHBG antibody: synthetic peptide directed towards the N terminal of human RHBG. Synthetic peptide located within the following region: RYNHKTDAALWHRSNHSNADNEFYFRYPSFQDVHAMVFGFGLMVFLQR
Formulation:	Liquid. Purified antibody supplied in 1x PBS buffer with 0.09% (w/v) sodium azide and 2% sucrose.
Purification:	Affinity Purified
Conjugation:	Unconjugated
Storage:	Store at -20°C as received.
Stability:	Stable for 12 months from date of receipt.
Predicted Protein Size:	47 kDa
Gene Name:	Rh family B glycoprotein (gene/pseudogene)
Database Link:	NP_065140 Entrez Gene 57127 Human Q9H310
Background:	RHBG and RHCG are non-erythroid members of the Rhesus (Rh) protein family that are mainly expressed in the kidney and belong to the methylammonium-ammonium permease/ammonia transporters superfamily. Rh family proteins are all predicted to be transmembrane proteins with 12 membrane spanning domains and intracytoplasmic N- and C-termini.
Synonyms:	SLC42A2

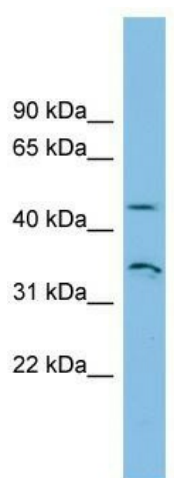


[View online »](#)

Note: Immunogen Sequence Homology: Pig: 100%; Human: 100%; Bovine: 100%; Rabbit: 100%; Guinea pig: 100%; Dog: 93%; Rat: 93%; Mouse: 93%; Zebrafish: 82%; Sheep: 80%

Protein Families: Transmembrane

Product images:



WB Suggested Anti-RHBG Antibody Titration: 0.2-1 ug/ml; ELISA Titer: 1: 312500; Positive Control: HT1080 cell lysate