

Product datasheet for **TA338414**

Man1c1 Rabbit Polyclonal Antibody

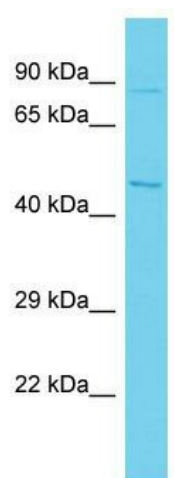
Product data:

Product Type:	Primary Antibodies
Applications:	WB
Recommended Dilution:	WB
Reactivity:	Mouse
Host:	Rabbit
Isotype:	IgG
Clonality:	Polyclonal
Immunogen:	The immunogen for anti-Man1c1 antibody is: synthetic peptide directed towards the C-terminal region of Mouse Man1c1. Synthetic peptide located within the following region: ESYMYLWRQTHDPIYREWGWEVVMMALEKHCRTEAGFSGIQDVYSSNPND
Formulation:	Liquid. Purified antibody supplied in 1x PBS buffer with 0.09% (w/v) sodium azide and 2% sucrose. <i>Note that this product is shipped as lyophilized powder to China customers.</i>
Purification:	Affinity Purified
Conjugation:	Unconjugated
Storage:	Store at -20°C as received.
Stability:	Stable for 12 months from date of receipt.
Predicted Protein Size:	71 kDa
Gene Name:	mannosidase, alpha, class 1C, member 1
Database Link:	NP_997120 Entrez Gene 230815 Mouse
Background:	The function of this protein remains unknown.
Synonyms:	HMIC; MAN1A3; MAN1C; pp6318
Note:	Immunogen Sequence Homology: Dog: 100%; Human: 100%; Mouse: 100%; Bovine: 100%; Rabbit: 100%; Pig: 93%; Rat: 93%; Horse: 93%; Guinea pig: 93%



[View online »](#)

Product images:



Host: Rabbit; Target Name: Man1c1; Sample
Tissue: Mouse Testis lysates; Antibody Dilution:
1.0 ug/ml