

Product datasheet for **TA338413**

ENTPD7 Rabbit Polyclonal Antibody

Product data:

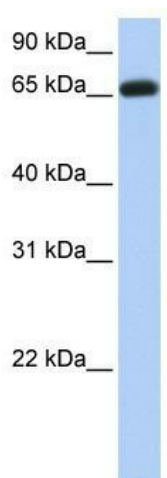
Product Type:	Primary Antibodies
Applications:	WB
Recommended Dilution:	WB
Reactivity:	Human
Host:	Rabbit
Isotype:	IgG
Clonality:	Polyclonal
Immunogen:	The immunogen for anti-ENTPD7 antibody: synthetic peptide directed towards the C terminal of human ENTPD7. Synthetic peptide located within the following region: EHLKYQCFKSAWMYQVLHEGFHFPYDYPNLRTAQLVYDREVQWTLGAIL
Formulation:	Liquid. Purified antibody supplied in 1x PBS buffer with 0.09% (w/v) sodium azide and 2% sucrose. <i>Note that this product is shipped as lyophilized powder to China customers.</i>
Purification:	Affinity Purified
Conjugation:	Unconjugated
Storage:	Store at -20°C as received.
Stability:	Stable for 12 months from date of receipt.
Predicted Protein Size:	69 kDa
Gene Name:	ectonucleoside triphosphate diphosphohydrolase 7
Database Link:	NP_065087 Entrez Gene 57089 Human Q9NQZ7
Background:	ENTPD7 is a multi-pass membrane protein. It belongs to the GDA1/CD39 NTPase family. It preferentially hydrolyzes nucleoside 5'-triphosphates. The order of activity with respect to possible substrates is UTP > GTP > CTP.
Synonyms:	LALP1
Note:	Immunogen Sequence Homology: Pig: 100%; Rat: 100%; Human: 100%; Mouse: 100%; Bovine: 100%; Guinea pig: 100%; Rabbit: 93%; Dog: 92%; Horse: 90%



[View online »](#)

Protein Families: Transmembrane

Product images:



WB Suggested Anti-ENTPD7 Antibody Titration:
0.2-1 ug/ml; Positive Control: Human brain