

Product datasheet for **TA338412**

Entpd7 Rabbit Polyclonal Antibody

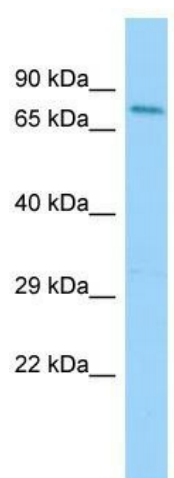
Product data:

Product Type:	Primary Antibodies
Applications:	WB
Recommended Dilution:	WB
Reactivity:	Mouse
Host:	Rabbit
Isotype:	IgG
Clonality:	Polyclonal
Immunogen:	The immunogen for anti-Entpd7 antibody is: synthetic peptide directed towards the C-terminal region of Mouse Entpd7. Synthetic peptide located within the following region: GMAWPVLAQRFKNGLFSSHADEHRLKYQCFKSAWMYEVLEHGFHFPYDYP
Formulation:	Liquid. Purified antibody supplied in 1x PBS buffer with 0.09% (w/v) sodium azide and 2% sucrose. <i>Note that this product is shipped as lyophilized powder to China customers.</i>
Purification:	Affinity Purified
Conjugation:	Unconjugated
Storage:	Store at -20°C as received.
Stability:	Stable for 12 months from date of receipt.
Predicted Protein Size:	69 kDa
Gene Name:	ectonucleoside triphosphate diphosphohydrolase 7
Database Link:	NP_444333 Entrez Gene 93685 Mouse Q3TCT4
Background:	Entpd7 preferentially hydrolyzes nucleoside 5'-triphosphates. The order of activity with respect to possible substrates is UTP > GTP > CTP .
Synonyms:	DKFZp667O124; FLJ30978; FLJ31830; FLJ41522; FLJ95364; LALP1; MGC141913; RP11-483F11.1
Note:	Immunogen Sequence Homology: Dog: 100%; Pig: 100%; Rat: 100%; Horse: 100%; Human: 100%; Mouse: 100%; Bovine: 100%; Guinea pig: 100%; Rabbit: 93%



[View online »](#)

Product images:



Host: Rabbit; Target Name: Entpd7; Sample
Tissue: Mouse Muscle lysates; Antibody Dilution:
1.0 ug/ml