

## Product datasheet for **TA338411**

### FAM20C Rabbit Polyclonal Antibody

#### Product data:

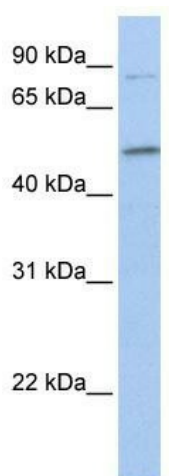
Product Type:	Primary Antibodies
Applications:	WB
Recommended Dilution:	WB
Reactivity:	Human
Host:	Rabbit
Isotype:	IgG
Clonality:	Polyclonal
Immunogen:	The immunogen for anti-FAM20C antibody: synthetic peptide directed towards the C terminal of human FAM20C. Synthetic peptide located within the following region: NETFIIHLDNNGRFGFKYSHDELSILVPLQQCCRIRKSTYLRLQLLAKEEY
Formulation:	Liquid. Purified antibody supplied in 1x PBS buffer with 0.09% (w/v) sodium azide and 2% sucrose. <i>Note that this product is shipped as lyophilized powder to China customers.</i>
Purification:	Affinity Purified
Conjugation:	Unconjugated
Storage:	Store at -20°C as received.
Stability:	Stable for 12 months from date of receipt.
Predicted Protein Size:	66 kDa
Gene Name:	family with sequence similarity 20 member C
Database Link:	<a href="#">NP_064608</a> <a href="#">Entrez Gene 56975 Human</a> <a href="#">Q8IXL6</a>
Background:	FAM20C belongs to the FAM20 family. FAM20C is a calcium-binding protein which may play a role in dentin mineralization. Mutations in FAM20C are associated with lethal osteosclerotic bone dysplasia (Raine Syndrome), highlighting a crucial molecule in bone development.
Synonyms:	DMP-4; DMP4; G-CK; GEF-CK; RNS
Note:	Immunogen Sequence Homology: Dog: 100%; Pig: 100%; Rat: 100%; Horse: 100%; Human: 100%; Mouse: 100%; Guinea pig: 100%; Bovine: 93%; Rabbit: 93%; Zebrafish: 93%



[View online »](#)

Protein Families: Secreted Protein, Transmembrane

### Product images:



WB Suggested Anti-FAM20C Antibody Titration:  
0.2-1 ug/ml; Positive Control: NTERA2 cell lysate