

Product datasheet for **TA338408**

SEMA4B Rabbit Polyclonal Antibody

Product data:

Product Type:	Primary Antibodies
Applications:	WB
Recommended Dilution:	WB
Reactivity:	Human
Host:	Rabbit
Isotype:	IgG
Clonality:	Polyclonal
Immunogen:	The immunogen for anti-SEMA4B antibody: synthetic peptide directed towards the N terminal of human SEMA4B. Synthetic peptide located within the following region: KGRCPFDPNFKSTALVVDGELYGTVSSFQGNPAISRSQSLRPTKTESS
Formulation:	Liquid. Purified antibody supplied in 1x PBS buffer with 0.09% (w/v) sodium azide and 2% sucrose. <i>Note that this product is shipped as lyophilized powder to China customers.</i>
Purification:	Affinity Purified
Conjugation:	Unconjugated
Storage:	Store at -20°C as received.
Stability:	Stable for 12 months from date of receipt.
Predicted Protein Size:	93 kDa
Gene Name:	semaphorin 4B
Database Link:	NP_064595 Entrez Gene 10509 Human Q9NPR2
Background:	SEMA4B is a single-pass type I membrane protein. It belongs to the semaphorin family. SEMA4B contains 1 Ig-like C2-type (immunoglobulin-like) domain, 1 PSI domain and 1 Sema domain. It inhibits axonal extension by providing local signals to specify territories inaccessible for growing axons.
Synonyms:	SEMAC; SemC



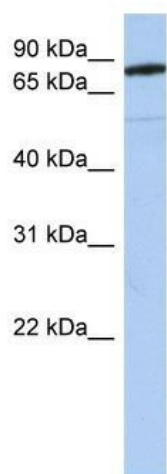
[View online »](#)

Note: Immunogen Sequence Homology: Dog: 100%; Pig: 100%; Rat: 100%; Horse: 100%; Human: 100%; Mouse: 100%; Rabbit: 100%; Guinea pig: 100%; Bovine: 86%

Protein Families: Transmembrane

Protein Pathways: Axon guidance

Product images:



WB Suggested Anti-SEMA4B Antibody Titration:
0.2-1 ug/ml; Positive Control: Human brain