

Product datasheet for **TA338407**

MFF Rabbit Polyclonal Antibody

Product data:

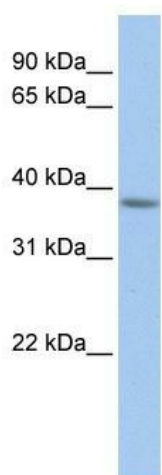
Product Type:	Primary Antibodies
Applications:	WB
Recommended Dilution:	WB
Reactivity:	Human
Host:	Rabbit
Isotype:	IgG
Clonality:	Polyclonal
Immunogen:	The immunogen for anti-MFF antibody: synthetic peptide directed towards the C terminal of human MFF. Synthetic peptide located within the following region: VVDASLRRQIIKLNRRLLQLLEENKERAKREVMYSITVAFWLLNSWLW
Formulation:	Liquid. Purified antibody supplied in 1x PBS buffer with 0.09% (w/v) sodium azide and 2% sucrose. <i>Note that this product is shipped as lyophilized powder to China customers.</i>
Purification:	Affinity Purified
Conjugation:	Unconjugated
Storage:	Store at -20°C as received.
Stability:	Stable for 12 months from date of receipt.
Predicted Protein Size:	38 kDa
Gene Name:	mitochondrial fission factor
Database Link:	NP_064579 Entrez Gene 56947 Human Q9GZY8
Background:	The exact function of MFF remains unknown.
Synonyms:	C2orf33; EMPF2; GL004
Note:	Immunogen Sequence Homology: Dog: 100%; Pig: 100%; Rat: 100%; Horse: 100%; Human: 100%; Mouse: 100%; Bovine: 100%; Rabbit: 100%; Zebrafish: 100%; Guinea pig: 100%; Yeast: 83%



[View online »](#)

Protein Families: Transmembrane

Product images:



WB Suggested Anti-MFF Antibody Titration: 0.2-1 ug/ml; Positive Control: Human Muscle