

## Product datasheet for **TA338406**

### CNNM4 Rabbit Polyclonal Antibody

#### Product data:

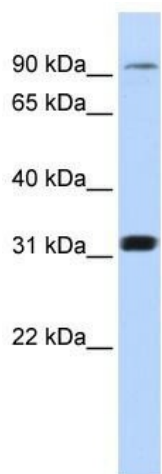
Product Type:	Primary Antibodies
Applications:	WB
Recommended Dilution:	WB
Reactivity:	Human
Host:	Rabbit
Isotype:	IgG
Clonality:	Polyclonal
Immunogen:	The immunogen for anti-CNNM4 antibody: synthetic peptide directed towards the middle region of human CNNM4. Synthetic peptide located within the following region: LLASRMENSPQFPIDGCTTHMENLAEKSELPVVDETTTLLNERNSSLHKA
Formulation:	Liquid. Purified antibody supplied in 1x PBS buffer with 0.09% (w/v) sodium azide and 2% sucrose. <i>Note that this product is shipped as lyophilized powder to China customers.</i>
Purification:	Affinity Purified
Conjugation:	Unconjugated
Storage:	Store at -20°C as received.
Stability:	Stable for 12 months from date of receipt.
Predicted Protein Size:	86 kDa
Gene Name:	cyclin and CBS domain divalent metal cation transport mediator 4
Database Link:	<a href="#">NP_064569</a> <a href="#">Entrez Gene 26504 Human</a> <a href="#">Q6P4Q7</a>
Background:	CNNM4 belongs to the ACDP family. It is a metal transporter. The interaction with the metal ion chaperone COX11 suggests that CNNM4 may play a role in sensory neuron functions.
Synonyms:	ACDP4
Note:	Immunogen Sequence Homology: Dog: 100%; Pig: 100%; Rat: 100%; Human: 100%; Mouse: 100%; Rabbit: 100%; Horse: 93%; Bovine: 93%; Guinea pig: 86%; Zebrafish: 83%



[View online »](#)

Protein Families: Transmembrane

### Product images:



WB Suggested Anti-CNNM4 Antibody Titration:  
0.2-1 ug/ml; Positive Control: 721\_B cell lysate