

Product datasheet for **TA338405**

C1GALT1 Rabbit Polyclonal Antibody

Product data:

Product Type:	Primary Antibodies
Applications:	WB
Recommended Dilution:	WB
Reactivity:	Human
Host:	Rabbit
Isotype:	IgG
Clonality:	Polyclonal
Immunogen:	The immunogen for anti-C1GALT1 antibody: synthetic peptide directed towards the middle region of human C1GALT1. Synthetic peptide located within the following region: NVEAGDSRDTIGKETFHPFVPEHHLIKGYLPRTFWYWNYNYYPPVEGPGC
Formulation:	Liquid. Purified antibody supplied in 1x PBS buffer with 0.09% (w/v) sodium azide and 2% sucrose. <i>Note that this product is shipped as lyophilized powder to China customers.</i>
Purification:	Affinity Purified
Conjugation:	Unconjugated
Storage:	Store at -20°C as received.
Stability:	Stable for 12 months from date of receipt.
Predicted Protein Size:	42 kDa
Gene Name:	core 1 synthase, glycoprotein-N-acetylgalactosamine 3-beta-galactosyltransferase 1
Database Link:	NP_064541 Entrez Gene 56913 Human Q9NS00
Background:	The common core 1 O-glycan structure Gal-beta-1-3GalNAc-R is a precursor for many extended mucin-type O-glycan structures in animal cell surface and secreted glycoproteins. Core 1 is synthesized by the transfer of Gal from UDP-Gal to GalNAc-alpha-1-R by c
Synonyms:	C1GALT; T-synthase
Note:	Immunogen Sequence Homology: Human: 100%; Mouse: 100%; Dog: 93%; Pig: 93%; Rat: 93%; Horse: 93%; Bovine: 93%; Guinea pig: 93%; Rabbit: 86%

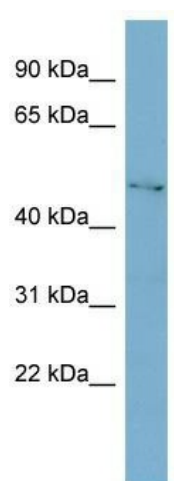


[View online »](#)

Protein Families: Transmembrane

Protein Pathways: Metabolic pathways, O-Glycan biosynthesis

Product images:



WB Suggested Anti-C1GALT1 Antibody Titration:
0.2-1 ug/ml; ELISA Titer: 1: 12500; Positive
Control: HT1080 cell lysate