

Product datasheet for **TA338403**

C15orf24 (EMC7) Rabbit Polyclonal Antibody

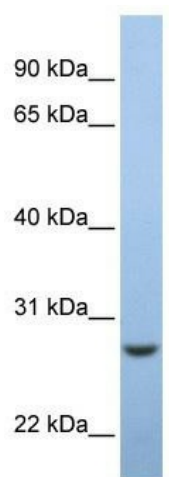
Product data:

Product Type:	Primary Antibodies
Applications:	WB
Recommended Dilution:	WB
Reactivity:	Human
Host:	Rabbit
Isotype:	IgG
Clonality:	Polyclonal
Immunogen:	The immunogen for anti-EMC7 antibody: synthetic peptide directed towards the middle region of human C15orf24. Synthetic peptide located within the following region: VDITSKGKMRARYVNYIKTSEVRLPYPLQMKSSGPPSYFIKRESWGWD
Formulation:	Liquid. Purified antibody supplied in 1x PBS buffer with 0.09% (w/v) sodium azide and 2% sucrose. <i>Note that this product is shipped as lyophilized powder to China customers.</i>
Purification:	Affinity Purified
Conjugation:	Unconjugated
Storage:	Store at -20°C as received.
Stability:	Stable for 12 months from date of receipt.
Predicted Protein Size:	26 kDa
Gene Name:	ER membrane protein complex subunit 7
Database Link:	NP_064539 Entrez Gene 56851 Human Q9NPA0
Background:	The exact function of EMC7 remains unknown.
Synonyms:	C11orf3; C15orf24; HT022; ORF1-FL1
Note:	Immunogen Sequence Homology: Dog: 100%; Pig: 100%; Rat: 100%; Horse: 100%; Human: 100%; Mouse: 100%; Bovine: 100%; Rabbit: 100%; Guinea pig: 100%
Protein Families:	Transmembrane



[View online »](#)

Product images:



WB Suggested Anti-EMC7 Antibody Titration: 0.2-1 ug/ml; ELISA Titer: 1: 312500; Positive Control: Human Muscle