

## Product datasheet for **TA338400**

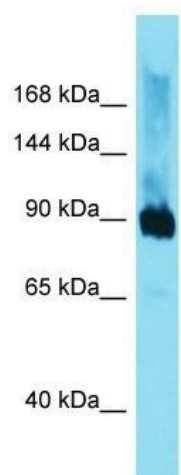
### DMGDH Rabbit Polyclonal Antibody

#### Product data:

Product Type:	Primary Antibodies
Applications:	WB
Recommended Dilution:	WB
Reactivity:	Mouse
Host:	Rabbit
Isotype:	IgG
Clonality:	Polyclonal
Immunogen:	The immunogen for anti-Dmgdh antibody is: synthetic peptide directed towards the middle region of Mouse Dmgdh. Synthetic peptide located within the following region: SELHDLRWIEEAAFRGGYDVEIQNITDEFGVLGVAGPYARRVLQKLTSE
Formulation:	Liquid. Purified antibody supplied in 1x PBS buffer with 0.09% (w/v) sodium azide and 2% sucrose. <i>Note that this product is shipped as lyophilized powder to China customers.</i>
Purification:	Affinity Purified
Conjugation:	Unconjugated
Storage:	Store at -20°C as received.
Stability:	Stable for 12 months from date of receipt.
Predicted Protein Size:	93 kDa
Gene Name:	dimethylglycine dehydrogenase
Database Link:	<a href="#">NP_037523</a> <a href="#">Entrez Gene 74129 Mouse Q9UI17</a>
Background:	The function of this protein remains unknown.
Synonyms:	DMGDHD; ME2GLYDH
Note:	Immunogen Sequence Homology: Pig: 100%; Rat: 100%; Horse: 100%; Human: 100%; Mouse: 100%; Rabbit: 100%; Dog: 93%; Bovine: 93%; Guinea pig: 92%; Zebrafish: 83%
Protein Pathways:	Glycine, serine and threonine metabolism, Metabolic pathways



[View online »](#)

**Product images:**

Host: Rabbit; Target Name: Dmgdh; Sample  
Tissue: Mouse Liver lysates; Antibody Dilution: 1.0  
ug/ml