

## Product datasheet for TA338399

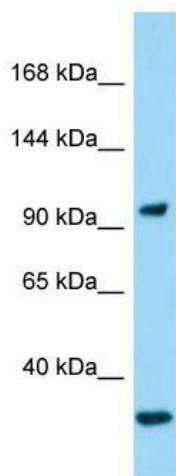
### GIGYF2 Rabbit Polyclonal Antibody

#### Product data:

<b>Product Type:</b>	Primary Antibodies
<b>Applications:</b>	WB
<b>Recommended Dilution:</b>	WB
<b>Reactivity:</b>	Human
<b>Host:</b>	Rabbit
<b>Isotype:</b>	IgG
<b>Clonality:</b>	Polyclonal
<b>Immunogen:</b>	The immunogen for anti-GIGYF2 antibody is: synthetic peptide directed towards the N-terminal region of Human GIGYF2. Synthetic peptide located within the following region: DDPGRPNFEEGGPTSVGRKHEFIRSESENWRIFREEQNGEDEDGGWRLAG
<b>Formulation:</b>	Liquid. Purified antibody supplied in 1x PBS buffer with 0.09% (w/v) sodium azide and 2% sucrose.
<b>Purification:</b>	Affinity Purified
<b>Conjugation:</b>	Unconjugated
<b>Storage:</b>	Store at -20°C as received.
<b>Stability:</b>	Stable for 12 months from date of receipt.
<b>Predicted Protein Size:</b>	95 kDa
<b>Gene Name:</b>	GRB10 interacting GYF protein 2
<b>Database Link:</b>	<a href="#">NP_056390</a> <a href="#">Entrez Gene 26058 Human</a> <a href="#">Q6Y7W6</a>
<b>Background:</b>	The function of this protein remains unknown.
<b>Synonyms:</b>	GYF2; PARK11; PERQ2; PERQ3; TNRC15



**Note:** Immunogen Sequence Homology: Dog: 100%; Pig: 100%; Rat: 100%; Horse: 100%; Human: 100%;  
Mouse: 100%; Bovine: 100%; Guinea pig: 100%; Rabbit: 93%

**Product images:**

Host: Rabbit

Target Name: GIGYF2

Sample Tissue: COLO205 Cell Lysate

Antibody Dilution: 1.0 µg/ml

Host: Rabbit; Target Name: GIGYF2; Sample  
Tissue: COLO205 Whole Cell lysates; Antibody  
Dilution: 1.0 µg/ml