

## Product datasheet for TA338398

### Piccolo (PCLO) Rabbit Polyclonal Antibody

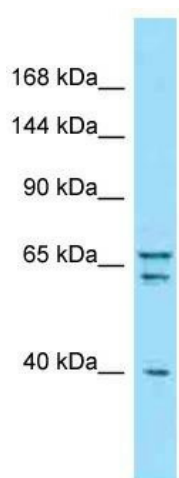
#### Product data:

Product Type:	Primary Antibodies
Applications:	WB
Recommended Dilution:	WB
Reactivity:	Human
Host:	Rabbit
Isotype:	IgG
Clonality:	Polyclonal
Immunogen:	The immunogen for anti-PCLO antibody is: synthetic peptide directed towards the C-terminal region of Human PCLO. Synthetic peptide located within the following region: SHGIFDPSKDMQVPTIEKSHSSPGSSKSSSEGHLSHGPSRSQKTSVT
Formulation:	Liquid. Purified antibody supplied in 1x PBS buffer with 0.09% (w/v) sodium azide and 2% sucrose.
Purification:	Affinity Purified
Conjugation:	Unconjugated
Storage:	Store at -20°C as received.
Stability:	Stable for 12 months from date of receipt.
Predicted Protein Size:	39 kDa
Gene Name:	piccolo presynaptic cytomatrix protein
Database Link:	<a href="#">NP_149015</a> <a href="#">Entrez Gene 27445 Human</a> <a href="#">Q9Y6V0</a>
Background:	The protein encoded by this gene is part of the presynaptic cytoskeletal matrix, which is involved in establishing active synaptic zones and in synaptic vesicle trafficking. Variations in this gene have been associated with bipolar disorder and major depressive disorder. Two transcript variants encoding different isoforms have been found for this gene.
Synonyms:	ACZ
Note:	Immunogen Sequence Homology: Pig: 100%; Rat: 100%; Horse: 100%; Human: 100%; Mouse: 100%; Bovine: 100%; Rabbit: 100%; Zebrafish: 93%; Guinea pig: 86%



[View online »](#)

Product images:



Host: Rabbit; Target Name: PCLO; Sample Tissue: Hela Whole Cell lysates; Antibody Dilution: 1.0 ug/ml