

## Product datasheet for **TA338396**

### Arginase 1 (ARG1) Rabbit Polyclonal Antibody

#### Product data:

|                         |                                                                                                                                                                                                                     |
|-------------------------|---------------------------------------------------------------------------------------------------------------------------------------------------------------------------------------------------------------------|
| Product Type:           | Primary Antibodies                                                                                                                                                                                                  |
| Applications:           | IHC, WB                                                                                                                                                                                                             |
| Recommended Dilution:   | WB, IHC                                                                                                                                                                                                             |
| Reactivity:             | Human                                                                                                                                                                                                               |
| Host:                   | Rabbit                                                                                                                                                                                                              |
| Isotype:                | IgG                                                                                                                                                                                                                 |
| Clonality:              | Polyclonal                                                                                                                                                                                                          |
| Immunogen:              | The immunogen for anti-ARG1 antibody: synthetic peptide directed towards the N terminal of human ARG1. Synthetic peptide located within the following region:<br>HSLAIGSISGHARVHPDLGVIWVDAHTDINTPLTTTSGNLHGQPVSFLLK |
| Formulation:            | Liquid. Purified antibody supplied in 1x PBS buffer with 0.09% (w/v) sodium azide and 2% sucrose.<br><i>Note that this product is shipped as lyophilized powder to China customers.</i>                             |
| Purification:           | Protein A purified                                                                                                                                                                                                  |
| Conjugation:            | Unconjugated                                                                                                                                                                                                        |
| Storage:                | Store at -20°C as received.                                                                                                                                                                                         |
| Stability:              | Stable for 12 months from date of receipt.                                                                                                                                                                          |
| Predicted Protein Size: | 35 kDa                                                                                                                                                                                                              |
| Gene Name:              | arginase 1                                                                                                                                                                                                          |
| Database Link:          | <a href="#">NP_000036</a><br><a href="#">Entrez Gene 383 Human</a><br><a href="#">P05089</a>                                                                                                                        |



[View online »](#)

**Background:**

Arginase catalyzes the hydrolysis of arginine to ornithine and urea. At least two isoforms of mammalian arginase exist (types I and II) which differ in their tissue distribution, subcellular localization, immunologic crossreactivity and physiologic function. The type I isoform encoded by this gene, is a cytosolic enzyme and expressed predominantly in the liver as a component of the urea cycle. Inherited deficiency of this enzyme results in argininemia, an autosomal recessive disorder characterized by hyperammonemia. Two transcript variants encoding different isoforms have been found for this gene. [provided by RefSeq, Sep 2011]

**Synonyms:**

arginase; arginase 1; liver; liver-type arginase; OTTHUMP00000017209; type I arginase

**Note:**

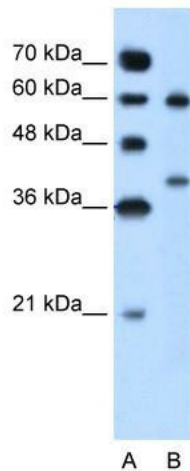
Immunogen Sequence Homology: Dog: 100%; Pig: 100%; Rat: 100%; Goat: 100%; Horse: 100%; Human: 100%; Bovine: 100%; Mouse: 93%; Guinea pig: 93%; Rabbit: 86%

**Protein Families:**

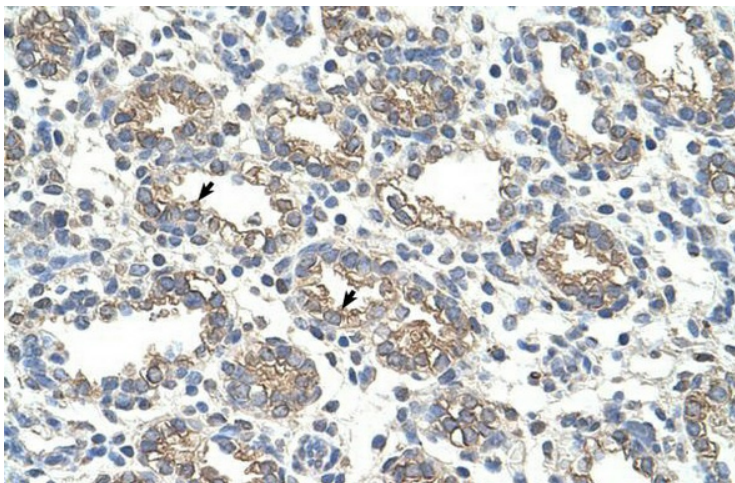
Druggable Genome

**Protein Pathways:**

Arginine and proline metabolism, Metabolic pathways

**Product images:**


WB Suggested Anti-ARG1 Antibody Titration: 5.0 ug/ml; Positive Control: Jurkat cell lysate



Human Lung