

Product datasheet for **TA338394**

CBS Rabbit Polyclonal Antibody

Product data:

Product Type:	Primary Antibodies
Applications:	IHC, WB
Recommended Dilution:	WB, IHC
Reactivity:	Human, Rat, Mouse
Host:	Rabbit
Isotype:	IgG
Clonality:	Polyclonal
Immunogen:	The immunogen for anti-CBS antibody: synthetic peptide directed towards the N terminal of human CBS. Synthetic peptide located within the following region: RCIIVMPEKMSSEKVDVLRALGAEIVRTPNARFDSPESHVGVAWRLKNE
Formulation:	Liquid. Purified antibody supplied in 1x PBS buffer with 0.09% (w/v) sodium azide and 2% sucrose. <i>Note that this product is shipped as lyophilized powder to China customers.</i>
Purification:	Protein A purified
Conjugation:	Unconjugated
Storage:	Store at -20°C as received.
Stability:	Stable for 12 months from date of receipt.
Predicted Protein Size:	60 kDa
Gene Name:	cystathionine-beta-synthase
Database Link:	NP_000062 Entrez Gene 12411 Mouse Entrez Gene 24250 Rat Entrez Gene 875 Human P35520
Background:	The protein encoded by this gene acts as a homotetramer to catalyze the conversion of homocysteine to cystathionine, the first step in the transsulfuration pathway. The encoded protein is allosterically activated by adenosyl-methionine and uses pyridoxal phosphate as a cofactor. Defects in this gene can cause cystathionine beta-synthase deficiency (CBS), which can lead to homocystinuria. Multiple alternatively spliced transcript variants have been found for this gene. [provided by RefSeq, May 2010]



[View online »](#)

Synonyms: HIP4

Note: Immunogen Sequence Homology: Dog: 100%; Pig: 100%; Rat: 100%; Horse: 100%; Human: 100%; Mouse: 100%; Bovine: 100%; Rabbit: 100%; Guinea pig: 100%; Zebrafish: 93%; Yeast: 86%

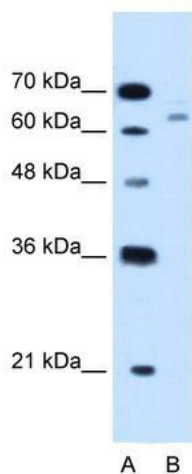
Protein Families: Druggable Genome

Protein Pathways: Cysteine and methionine metabolism, Glycine, serine and threonine metabolism, Metabolic pathways, Selenoamino acid metabolism

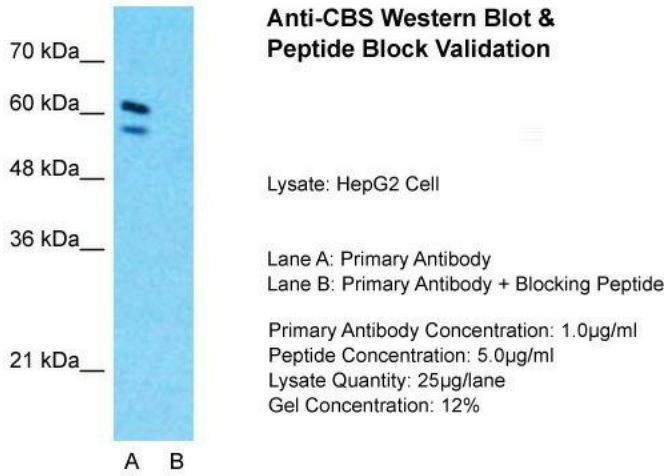
Product images:



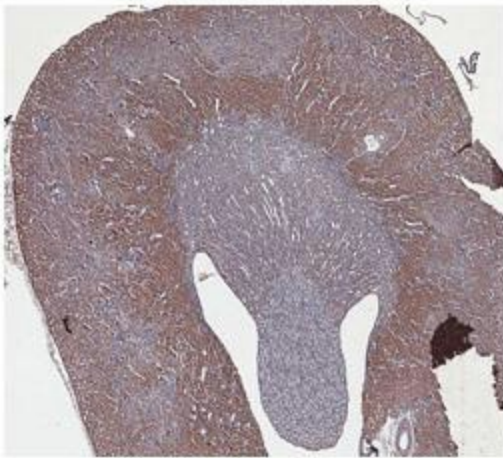
CBS- 60/70 kDa



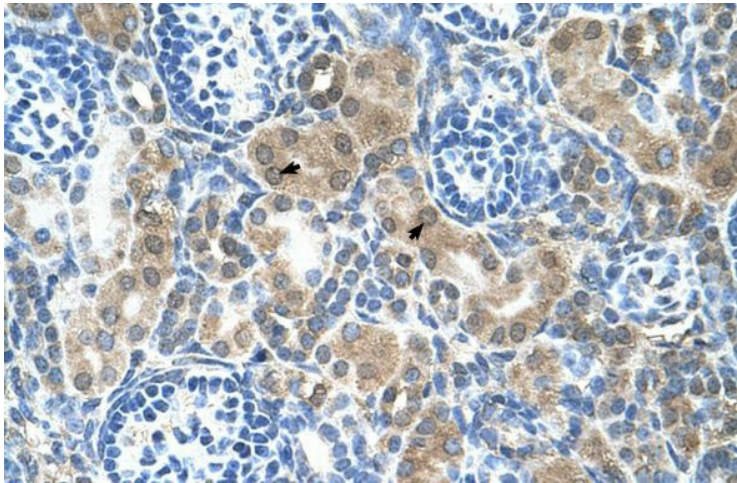
WB Suggested Anti-CBS Antibody Titration: 1.25 ug/ml; Positive Control: HepG2 cell lysate



Host: Rabbit; Target Name: CBS; Sample Tissue: HepG2; Lane A: Primary Antibody; Lane B: Primary Antibody + Blocking Peptide; Primary Antibody Concentration: 1 ug/ml; Peptide Concentration: 5 ug/ml; Lysate Quantity: 25 ug/lane/lane; Gel Concentration: 0.12



Mouse Brain



Kidney