

Product datasheet for **TA338390**

Chloride Channel 5 (CLCN5) Rabbit Polyclonal Antibody

Product data:

Product Type:	Primary Antibodies
Applications:	WB
Recommended Dilution:	WB
Reactivity:	Mouse, Rat
Host:	Rabbit
Isotype:	IgG
Clonality:	Polyclonal
Immunogen:	The immunogen for anti-Clcn5 antibody: synthetic peptide corresponding to a region of Mouse. Synthetic peptide located within the following region: LVVIMFELTGGLEYIVPLMAAAMTSKWVADALGREGIYDAHIRLNGYPFL
Formulation:	Liquid. Purified antibody supplied in 1x PBS buffer with 0.09% (w/v) sodium azide and 2% sucrose. <i>Note that this product is shipped as lyophilized powder to China customers.</i>
Purification:	Affinity Purified
Conjugation:	Unconjugated
Storage:	Store at -20°C as received.
Stability:	Stable for 12 months from date of receipt.
Predicted Protein Size:	83 kDa
Gene Name:	chloride voltage-gated channel 5
Database Link:	NP_000075 Entrez Gene 12728 Mouse Entrez Gene 25749 Rat P51795
Background:	Proton-coupled chloride transporter. Functions as antiport system and exchanges chloride ions against protons. Important for normal acidification of the endosome lumen. May play an important role in renal tubular function.
Synonyms:	CIC-5; CLC5; CLCK2; DENTS; hCIC-K2; NPHL1; NPHL2; XLRH; XRN

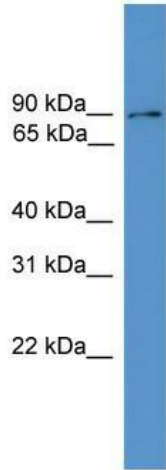


[View online »](#)

Note: Immunogen Sequence Homology: Dog: 100%; Pig: 100%; Rat: 100%; Horse: 100%; Human: 100%; Mouse: 100%; Sheep: 100%; Bovine: 100%; Rabbit: 100%; Guinea pig: 100%; Zebrafish: 93%

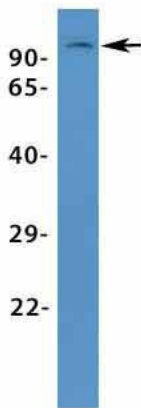
Protein Families: Druggable Genome, Ion Channels: Other, Transmembrane

Product images:



WB Suggested Anti-Clcn5 Antibody Titration: 0.2-1 ug/ml; ELISA Titer: 1:62500; Positive Control: Mouse Brain

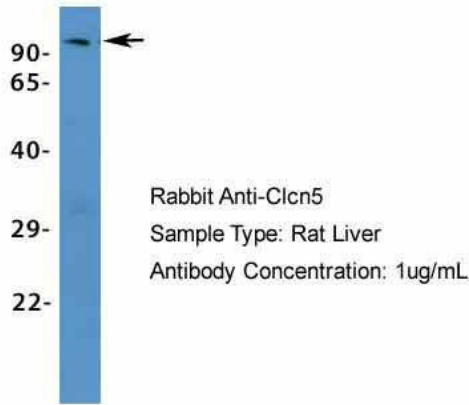
Clcn5



Rabbit Anti-Clcn5
Sample Type: Rat Lung
Antibody Concentration: 1ug/mL

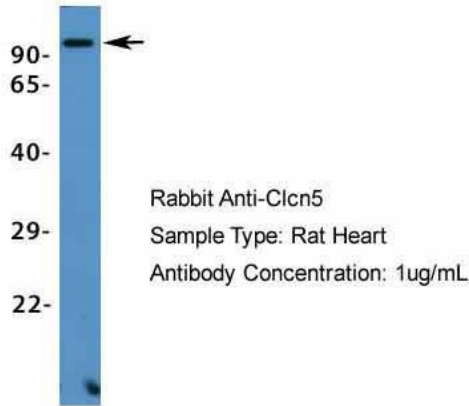
Host: Rabbit; Target Name: Clcn5; Sample Tissue: Rat Lung; Antibody Dilution: 1.0 ug/ml

Clcn5



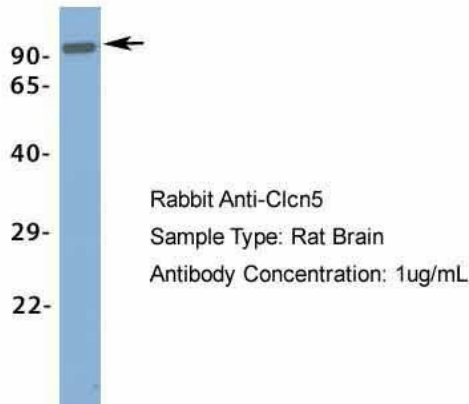
Host: Rabbit; Target Name: Clcn5; Sample Tissue: Rat Liver; Antibody Dilution: 1.0 µg/ml

Clcn5



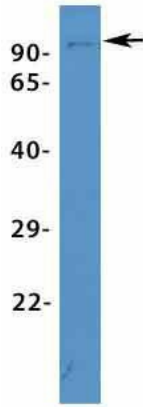
Host: Rabbit; Target Name: Clcn5; Sample Tissue: Mouse Heart; Antibody Dilution: 1.0 µg/ml

Clcn5



Host: Rabbit; Target Name: Clcn5; Sample Tissue: Rat Brain; Antibody Dilution: 1.0 µg/ml

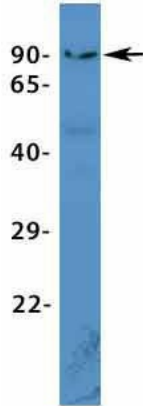
Clcn5



Rabbit Anti-Clcn5
Sample Type: Mouse Spleen
Antibody Concentration: 1ug/mL

Host: Rabbit; Target Name: Clcn5; Sample Tissue: Mouse Spleen; Antibody Dilution: 1.0 ug/ml

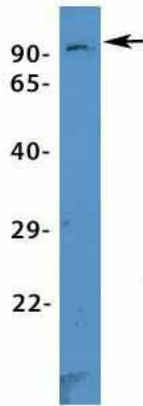
Clcn5



Rabbit Anti-Clcn5
Sample Type: Mouse Liver
Antibody Concentration: 1ug/mL

Host: Rabbit; Target Name: Clcn5; Sample Tissue: Mouse Liver; Antibody Dilution: 1.0 ug/ml

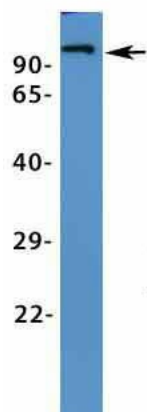
Clcn5



Rabbit Anti-Clcn5
Sample Type: Mouse Kidney
Antibody Concentration: 1ug/mL

Host: Rabbit; Target Name: Clcn5; Sample Tissue: Mouse Kidney; Antibody Dilution: 1.0 ug/ml

Clcn5



Rabbit Anti-Clcn5
Sample Type: Rat Muscle
Antibody Concentration: 1ug/mL

Host: Rabbit; Target Name: Clcn5; Sample Tissue:
Rat Muscle; Antibody Dilution: 1.0 ug/ml