

Product datasheet for **TA338388**

CLCNKB Rabbit Polyclonal Antibody

Product data:

Product Type:	Primary Antibodies
Applications:	WB
Recommended Dilution:	WB
Reactivity:	Human
Host:	Rabbit
Isotype:	IgG
Clonality:	Polyclonal
Immunogen:	The immunogen for anti-CLCNKB antibody: synthetic peptide directed towards the N terminal of human CLCNKB. Synthetic peptide located within the following region: MEEFVGLREGSSGNPVTQLQELWGPCPRIRRGIRGGLEWLKQKLFRLGEDW
Formulation:	Liquid. Purified antibody supplied in 1x PBS buffer with 0.09% (w/v) sodium azide and 2% sucrose. <i>Note that this product is shipped as lyophilized powder to China customers.</i>
Purification:	Affinity Purified
Conjugation:	Unconjugated
Storage:	Store at -20°C as received.
Stability:	Stable for 12 months from date of receipt.
Predicted Protein Size:	50 kDa
Gene Name:	chloride voltage-gated channel Kb
Database Link:	NP_000076 Entrez Gene 1188 Human P51801



[View online »](#)

Background:

The protein encoded by this gene is a member of the family of voltage-gated chloride channels. Chloride channels have several functions, including the regulation of cell volume, membrane potential stabilization, signal transduction and transepithelial transport. This gene is expressed predominantly in the kidney and may be important for renal salt reabsorption. Mutations in this gene are associated with autosomal recessive Bartter syndrome type 3 (BS3). Alternatively spliced transcript variants encoding different isoforms have been found for this gene. [provided by RefSeq, Sep 2009]

Synonyms:

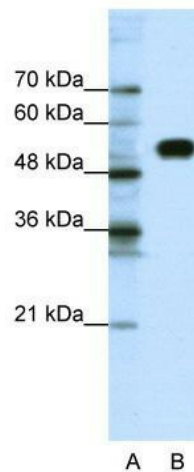
CIC-K2; CIC-Kb; CLCKB

Note:

Immunogen Sequence Homology: Horse: 100%; Human: 100%; Pig: 93%; Rat: 93%; Mouse: 93%; Bovine: 93%; Rabbit: 93%; Guinea pig: 93%; Dog: 86%

Protein Families:

Druggable Genome, Transmembrane

Product images:

WB Suggested Anti-CLCNKB Antibody Titration:
0.2-1 ug/ml; ELISA Titer: 1:62500; Positive Control:
Jurkat cell lysate