

Product datasheet for **TA338387**

Stefin B (CSTB) Rabbit Polyclonal Antibody

Product data:

Product Type:	Primary Antibodies
Applications:	IHC, WB
Recommended Dilution:	WB, IHC
Reactivity:	Human
Host:	Rabbit
Isotype:	IgG
Clonality:	Polyclonal
Immunogen:	The immunogen for anti-CSTB antibody: synthetic peptide directed towards the N terminal of human CSTB. Synthetic peptide located within the following region: MMCGAPSATQPATAETQHIADQVRSQLEEKENKKFPVFKAVSFKSQVVAG
Formulation:	Liquid. Purified antibody supplied in 1x PBS buffer with 0.09% (w/v) sodium azide and 2% sucrose. <i>Note that this product is shipped as lyophilized powder to China customers.</i>
Purification:	Affinity Purified
Conjugation:	Unconjugated
Storage:	Store at -20°C as received.
Stability:	Stable for 12 months from date of receipt.
Predicted Protein Size:	11 kDa
Gene Name:	cystatin B
Database Link:	NP_000091 Entrez Gene 1476 Human P04080



[View online »](#)

Background:

The cystatin superfamily encompasses proteins that contain multiple cystatin-like sequences. Some of the members are active cysteine protease inhibitors, while others have lost or perhaps never acquired this inhibitory activity. There are three inhibitory families in the superfamily, including the type 1 cystatins (stefins), type 2 cystatins and kininogens. This gene encodes a stefin that functions as an intracellular thiol protease inhibitor. The protein is able to form a dimer stabilized by noncovalent forces, inhibiting papain and cathepsins I, h and b. The protein is thought to play a role in protecting against the proteases leaking from lysosomes. Evidence indicates that mutations in this gene are responsible for the primary defects in patients with progressive myoclonic epilepsy (EPM1). [provided by RefSeq, Jul 2008]

Synonyms:

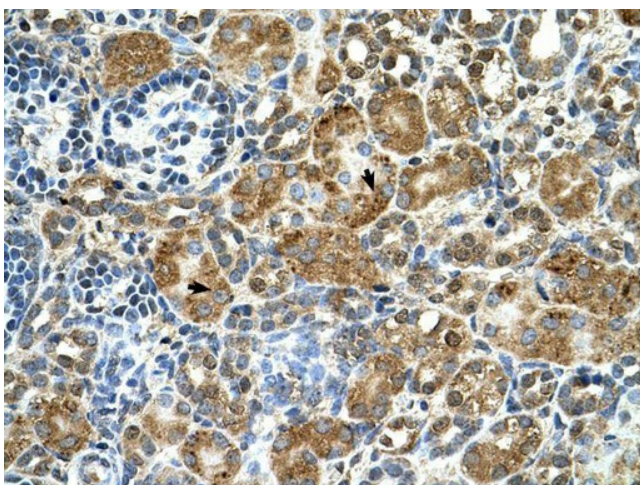
CPI-B; CST6; EPM1; EPM1A; PME; STFB; ULD

Note:

Immunogen Sequence Homology: Horse: 100%; Human: 100%; Sheep: 100%; Bovine: 100%; Pig: 93%; Mouse: 93%; Rat: 86%; Guinea pig: 86%; Rabbit: 79%

Product images:

WB Suggested Anti-CSTB Antibody Titration: 0.25 ug/ml; Positive Control: 293T cells lysate



Immunohistochemistry with Transfected 293T cell lysate tissue at an antibody concentration of 0.25 ug/ml. using anti-CSTB antibody