

## Product datasheet for **TA338386**

### Stefin B (CSTB) Rabbit Polyclonal Antibody

#### Product data:

Product Type:	Primary Antibodies
Applications:	IHC, WB
Recommended Dilution:	WB, IHC
Reactivity:	Human
Host:	Rabbit
Isotype:	IgG
Clonality:	Polyclonal
Immunogen:	The immunogen for anti-CSTB antibody: synthetic peptide directed towards the middle region of human CSTB. Synthetic peptide located within the following region: AGTNYFIKVVHVGDEDFVHLRVFQSLPHENKPLTLSNYQTNKAKHDELTYF
Formulation:	Liquid. Purified antibody supplied in 1x PBS buffer with 0.09% (w/v) sodium azide and 2% sucrose. <i>Note that this product is shipped as lyophilized powder to China customers.</i>
Purification:	Affinity Purified
Conjugation:	Unconjugated
Storage:	Store at -20°C as received.
Stability:	Stable for 12 months from date of receipt.
Predicted Protein Size:	11 kDa
Gene Name:	cystatin B
Database Link:	<a href="#">NP_000091</a> <a href="#">Entrez Gene 1476 Human</a> <a href="#">P04080</a>



[View online »](#)

**Background:**

The cystatin superfamily encompasses proteins that contain multiple cystatin-like sequences. Some of the members are active cysteine protease inhibitors, while others have lost or perhaps never acquired this inhibitory activity. There are three inhibitory families in the superfamily, including the type 1 cystatins (stefins), type 2 cystatins and kininogens. This gene encodes a stefin that functions as an intracellular thiol protease inhibitor. The protein is able to form a dimer stabilized by noncovalent forces, inhibiting papain and cathepsins I, h and b. The protein is thought to play a role in protecting against the proteases leaking from lysosomes. Evidence indicates that mutations in this gene are responsible for the primary defects in patients with progressive myoclonic epilepsy (EPM1). [provided by RefSeq, Jul 2008]

**Synonyms:**

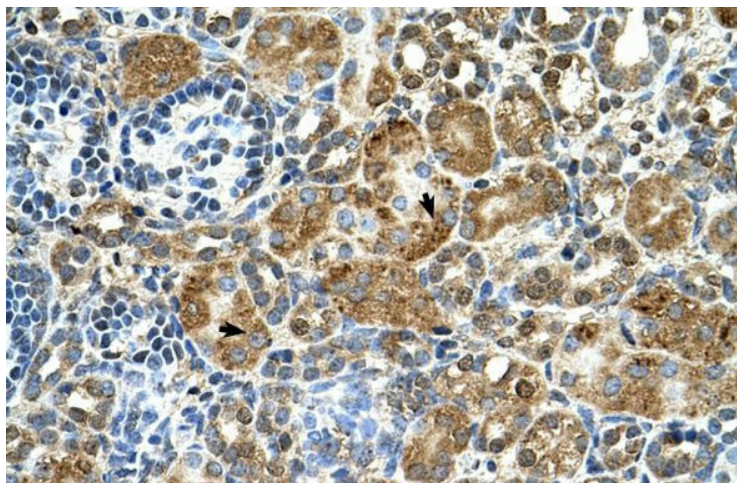
CPI-B; CST6; EPM1; EPM1A; PME; STFB; ULD

**Note:**

Immunogen Sequence Homology: Human: 100%; Dog: 92%; Horse: 85%; Mouse: 83%; Pig: 79%; Rat: 79%; Rabbit: 77%

**Product images:**


CSTB antibody - middle region validated by WB using Transfected 293T cell lysate at 0.25 ug/ml.



Human kidney